

SETD5 Rabbit Polyclonal Antibody



CAB14140

Product Information

Size:

20uL, 50uL, 100uL, 200uL

Observed MW:

Calculated MW:

145kDa/147kDa/157kDa

Applications:

IHC IF

Reactivity:

Human

Protein Background

This function of this gene has yet to be determined but mutations in this gene have been associated with autosomal dominant mental retardation-23. Alternative splicing results in multiple transcript variants encoding different isoforms.

Immunogen information

Gene ID:

55209

Uniprot

Q9C0A6

Synonyms:

SETD5

Antibody Information

Recommended dilutions:

IHC 1:50 - 1:200 IF 1:50 - 1:200

Source:

Rabbit

Isotype:

IgG

Purification:

Affinity purification

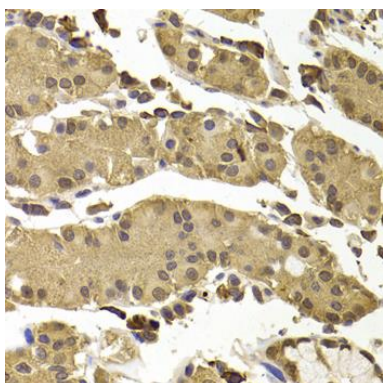
Immunogen:

Recombinant fusion protein containing a sequence corresponding to amino acids 520-740 of human SETD5 (NP_001073986.1).

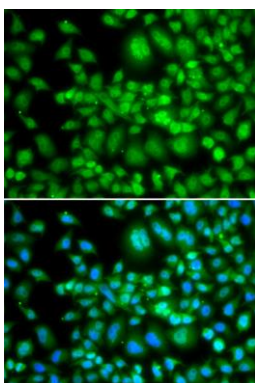
Storage:

Store at -20°C. Avoid freeze / thaw cycles. Buffer: PBS with 0.02% sodium azide, 50% glycerol, pH7.3.

Product Images



Immunohistochemistry of paraffin-embedded human stomach using SETD5 antibody (CAB14140) at dilution of 1:100 (40x lens).



Immunofluorescence analysis of MCF-7 cells using SETD5 antibody (CAB14140). Blue: DAPI for nuclear staining.