

TGFBR2 Rabbit Polyclonal Antibody



CAB1415

Product Information

Size:

20uL, 50uL, 100uL, 200uL

Observed MW:

75kDa

Calculated MW:

64kDa/67kDa

Applications:

WB IHC IF

Reactivity:

Human, Mouse, Rat

Antibody Information

Recommended dilutions:

WB 1:500 - 1:2000 IHC 1:50
- 1:200 IF 1:50 - 1:200

Source:

Rabbit

Isotype:

IgG

Purification:

Affinity purification

Protein Background

This gene encodes a member of the Ser/Thr protein kinase family and the TGFBR2 receptor subfamily. The encoded protein is a transmembrane protein that has a protein kinase domain, forms a heterodimeric complex with another receptor protein, and binds TGF-beta. This receptor/ligand complex phosphorylates proteins, which then enter the nucleus and regulate the transcription of a subset of genes related to cell proliferation. Mutations in this gene have been associated with Marfan Syndrome, Loeys-Deitz Aortic Aneurysm Syndrome, and the development of various types of tumors. Alternatively spliced transcript variants encoding different isoforms have been characterized.

Immunogen information

Gene ID:

7048

Uniprot

P37173

Synonyms:

AAT3; FAA3; LDS1B; LDS2; LDS2B; MFS2; RIIC; TAAD2; TGFR-2;
TGFbeta-RII; TGF beta Receptor II; TGFBR2

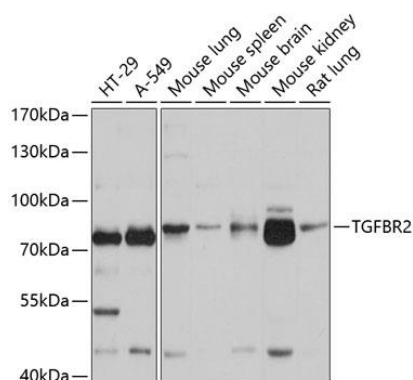
Immunogen:

Recombinant fusion protein containing a sequence corresponding to amino acids 23-280 of human TGFBR2 (NP_003233.4).

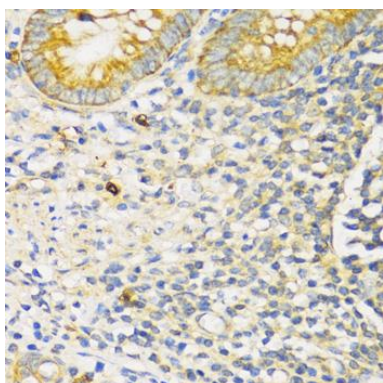
Storage:

Store at -20°C. Avoid freeze / thaw cycles. Buffer: PBS with 0.02% sodium azide, 50% glycerol, pH7.3.

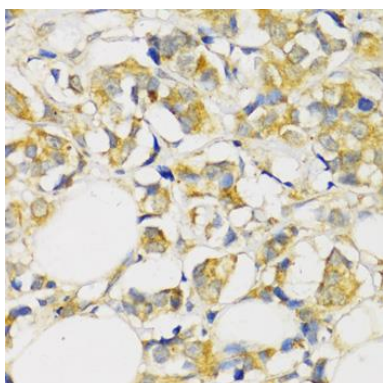
Product Images



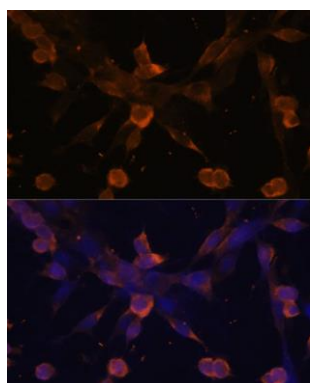
Western blot analysis of extracts of various cell lines, using TGFBR2 antibody (CAB1415) at 1:1000 dilution. Secondary antibody: HRP Goat Anti-Rabbit IgG (H+L) (CABS014) at 1:10000 dilution. Lysates/proteins: 25ug per lane. Blocking buffer: 3% nonfat dry milk in TBST. Detection: ECL Basic Kit (CABM00020). Exposure time: 3s.



Immunohistochemistry of paraffin-embedded human appendix using TGFBR2 antibody (CAB1415) at dilution of 1:100 (40x lens).



Immunohistochemistry of paraffin-embedded human breast cancer using TGFBR2 antibody (CAB1415) at dilution of 1:100 (40x lens).



Immunofluorescence analysis of NIH/3T3 cells using TGFBR2 antibody (CAB1415) at dilution of 1:100. Blue: DAPI for nuclear staining.