

PHC3 Rabbit Polyclonal Antibody



CAB14151

Product Information

Size:

20uL, 50uL, 100uL, 200uL

Observed MW:

Calculated MW:

14kDa/16kDa/19kDa/35kDa/
104kDa/106kDa/107kDa

Applications:

IF

Reactivity:

Human

Antibody Information

Recommended dilutions:

IF 1:50 - 1:100

Source:

Rabbit

Isotype:

IgG

Purification:

Affinity purification

Protein Background

Immunogen information

Gene ID:

80012

Uniprot

Q8NDX5

Synonyms:

PHC3; EDR3; HPH3

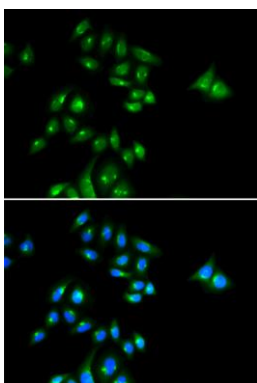
Immunogen:

Recombinant fusion protein containing a sequence corresponding to amino acids 100-300 of human PHC3 (NP_079223.3).

Storage:

Store at -20°C. Avoid freeze / thaw cycles. Buffer: PBS with 0.02% sodium azide, 50% glycerol, pH7.3.

Product Images



Immunofluorescence analysis of U2OS cells using PHC3 antibody (CAB14151). Blue: DAPI for nuclear staining.