

CANT1 Rabbit Polyclonal Antibody



CAB14157

Product Information

Size:

20uL, 50uL, 100uL, 200uL

Observed MW:

Calculated MW:

27kDa/38kDa/44kDa

Applications:

IF

Reactivity:

Human

Antibody Information

Recommended dilutions:

IF 1:50 - 1:100

Source:

Rabbit

Isotype:

IgG

Purification:

Affinity purification

Protein Background

This protein encoded by this gene belongs to the apyrase family. It functions as a calcium-dependent nucleotidase with a preference for UDP. Mutations in this gene are associated with Desbuquois dysplasia with hand anomalies. Alternatively spliced transcript variants have been noted for this gene.

Immunogen information

Gene ID:

124583

Uniprot

Q8WVQ1

Synonyms:

CANT1; DBQD; DBQD1; SCAN-1; SCAN1; SHAPY

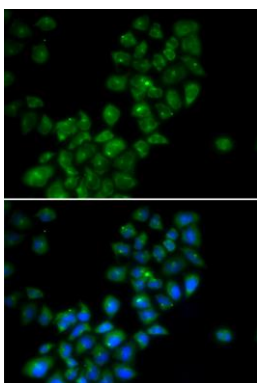
Immunogen:

Recombinant fusion protein containing a sequence corresponding to amino acids 102-401 of human CANT1 (NP_001153245.1).

Storage:

Store at -20°C. Avoid freeze / thaw cycles. Buffer: PBS with 0.02% sodium azide, 50% glycerol, pH7.3.

Product Images



Immunofluorescence analysis of HeLa cells using CANT1 antibody (CAB14157). Blue: DAPI for nuclear staining.