

# TICAM1 Rabbit Polyclonal Antibody



CAB14162

## Product Information

### Size:

20uL, 50uL, 100uL, 200uL

### Observed MW:

76kDa

### Calculated MW:

76kDa

### Applications:

WB

### Reactivity:

Human, Mouse

## Protein Background

This gene encodes an adaptor protein containing a Toll/interleukin-1 receptor (TIR) homology domain, which is an intracellular signaling domain that mediates protein-protein interactions between the Toll-like receptors (TLRs) and signal-transduction components. This protein is involved in native immunity against invading pathogens. It specifically interacts with toll-like receptor 3, but not with other TLRs, and this association mediates dsRNA induction of interferon-beta through activation of nuclear factor kappa-B, during an antiviral immune response.

## Immunogen information

### Gene ID:

148022

### Uniprot

Q8IUC6

### Synonyms:

IIAE6; MyD88-3; PRVTIRB; TICAM-1; TRIF; TRIF/TICAM1; TICAM1

## Antibody Information

### Recommended dilutions:

WB 1:500 - 1:2000

### Source:

Rabbit

### Isotype:

IgG

### Purification:

Affinity purification

### Immunogen:

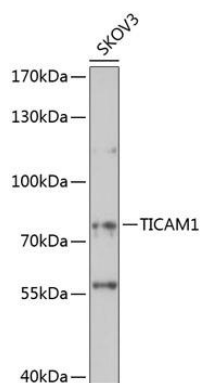
A synthetic peptide corresponding to a sequence within amino acids 150-250 of human TICAM1 (NP\_891549.1).

### Storage:

Store at -20°C. Avoid freeze / thaw cycles. Buffer: PBS with 0.02% sodium azide, 50% glycerol, pH7.3.

## Product Images

---



Western blot analysis of extracts of SKOV3 cells, using TICAM1 antibody (CAB14162) at 1:1000 dilution. Secondary antibody: HRP Goat Anti-Rabbit IgG (H+L) (CABS014) at 1:10000 dilution. Lysates/proteins: 25ug per lane. Blocking buffer: 3% nonfat dry milk in TBST. Detection: ECL Enhanced Kit (CABM00021). Exposure time: 1s.