

# METTL2A Rabbit Polyclonal Antibody



CAB14166

---

## Product Information

### Size:

20uL, 50uL, 100uL, 200uL

### Observed MW:

### Calculated MW:

27kDa/43kDa

### Applications:

IF

### Reactivity:

Human

## Antibody Information

### Recommended dilutions:

IF 1:50 - 1:100

### Source:

Rabbit

### Isotype:

IgG

### Purification:

Affinity purification

## Protein Background

### Immunogen information

#### Gene ID:

339175

#### Uniprot

Q96IZ6

#### Synonyms:

METTL2A; METTL2

#### Immunogen:

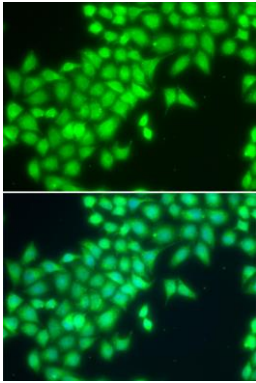
Recombinant fusion protein containing a sequence corresponding to amino acids 139-378 of human METTL2A (NP\_859076.3).

#### Storage:

Store at -20°C. Avoid freeze / thaw cycles. Buffer: PBS with 0.02% sodium azide, 50% glycerol, pH7.3.

## Product Images

---



Immunofluorescence analysis of MCF-7 cells using METTL2A antibody (CAB14166). Blue: DAPI for nuclear staining.