

SLC6A4 Rabbit Polyclonal Antibody



CAB14171

Product Information

Size:

20uL, 50uL, 100uL, 200uL

Observed MW:

75kDa

Calculated MW:

70kDa/74kDa

Applications:

WB IHC

Reactivity:

Human, Mouse, Rat

Antibody Information

Recommended dilutions:

WB 1:500 - 1:2000 IHC 1:50
- 1:200

Source:

Rabbit

Isotype:

IgG

Purification:

Affinity purification

Protein Background

This gene encodes an integral membrane protein that transports the neurotransmitter serotonin from synaptic spaces into presynaptic neurons. The encoded protein terminates the action of serotonin and recycles it in a sodium-dependent manner. This protein is a target of psychomotor stimulants, such as amphetamines and cocaine, and is a member of the sodium:neurotransmitter symporter family. A repeat length polymorphism in the promoter of this gene has been shown to affect the rate of serotonin uptake and may play a role in sudden infant death syndrome, aggressive behavior in Alzheimer disease patients, and depression-susceptibility in people experiencing emotional trauma.

Immunogen information

Gene ID:

6532

Uniprot

P31645

Synonyms:

5-HTT; 5-HTTLPR; 5HTT; HTT; OCD1; SERT; SERT1; hSERT; SLC6A4

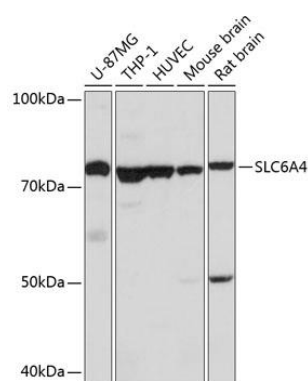
Immunogen:

A synthetic peptide corresponding to a sequence within amino acids 500 to the C-terminus of human SLC6A4 (NP_001036.1).

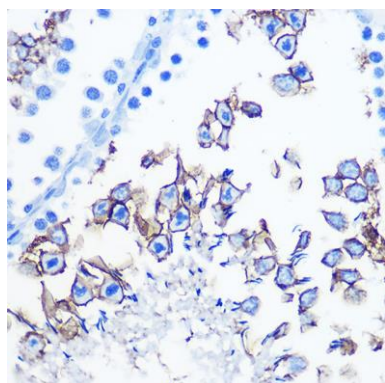
Storage:

Store at -20°C. Avoid freeze / thaw cycles. Buffer: PBS with 0.02% sodium azide, 50% glycerol, pH7.3.

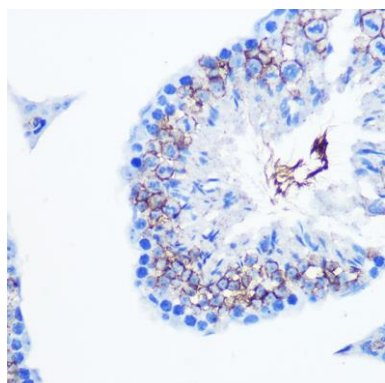
Product Images



Western blot analysis of extracts of various cell lines, using SLC6A4 Polyclonal Antibody (CAB14171) at 1:1000 dilution. Secondary antibody: HRP Goat Anti-Rabbit IgG (H+L) (CABS014) at 1:10000 dilution. Lysates/proteins: 25ug per lane. Blocking buffer: 3% nonfat dry milk in TBST. Detection: ECL Basic Kit (CABM00020). Exposure time: 3s.



Immunohistochemistry of paraffin-embedded rat testis using SLC6A4 Rabbit pAb (CAB14171) at dilution of 1:100 (40x lens).



Immunohistochemistry of paraffin-embedded mouse testis using SLC6A4 Rabbit pAb (CAB14171) at dilution of 1:100 (40x lens).