

AIRE Rabbit Polyclonal Antibody



CAB14183

Product Information

Size:

20uL, 50uL, 100uL, 200uL

Observed MW:

50kDa

Calculated MW:

25kDa/35kDa/36kDa/57kDa

Applications:

WB IHC

Reactivity:

Human, Mouse, Rat

Protein Background

This gene encodes a transcriptional regulator that forms nuclear bodies and interacts with the transcriptional coactivator CREB binding protein. The encoded protein plays an important role in immunity by regulating the expression of autoantigens and negative selection of autoreactive T-cells in the thymus. Mutations in this gene cause the rare autosomal-recessive systemic autoimmune disease termed autoimmune polyendocrinopathy with candidiasis and ectodermal dystrophy (APECED).

Immunogen information

Gene ID:

326

Uniprot

O43918

Synonyms:

AIRE; AIRE1; APECED; APS1; APSI; PGA1

Antibody Information

Recommended dilutions:

WB 1:500 - 1:2000 IHC 1:50 - 1:200

Source:

Rabbit

Isotype:

IgG

Purification:

Affinity purification

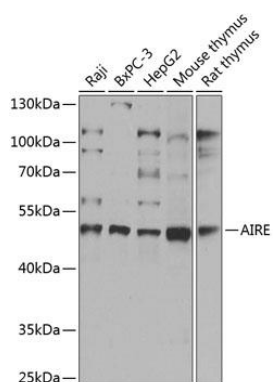
Immunogen:

Recombinant fusion protein containing a sequence corresponding to amino acids 1-280 of human AIRE (NP_000374.1).

Storage:

Store at -20°C. Avoid freeze / thaw cycles. Buffer: PBS with 0.02% sodium azide, 50% glycerol, pH7.3.

Product Images



Western blot analysis of extracts of various cell lines, using AIRE antibody (CAB14183) at 1:1000 dilution. Secondary antibody: HRP Goat Anti-Rabbit IgG (H+L) (CABS014) at 1:10000 dilution. Lysates/proteins: 25ug per lane. Blocking buffer: 3% nonfat dry milk in TBST. Detection: ECL Basic Kit (CABM00020). Exposure time: 1s.