

ESRRA Rabbit Polyclonal Antibody



CAB14184

Product Information

Size:

20uL, 50uL, 100uL, 200uL

Observed MW:

46kDa

Calculated MW:

45kDa

Applications:

WB IHC IF

Reactivity:

Human, Mouse, Rat

Antibody Information

Recommended dilutions:

WB 1:500 - 1:2000 IHC 1:50
- 1:200 IF 1:50 - 1:200

Source:

Rabbit

Isotype:

IgG

Purification:

Affinity purification

Protein Background

The protein encoded by this gene is a nuclear receptor that is closely related to the estrogen receptor. This protein acts as a site-specific transcription regulator and has been also shown to interact with estrogen and the transcription factor TFIIIB by direct protein-protein contact. The binding and regulatory activities of this protein have been demonstrated in the regulation of a variety of genes including lactoferrin, osteopontin, medium-chain acyl coenzyme A dehydrogenase (MCAD) and thyroid hormone receptor genes. A processed pseudogene of ESRRA is located on chromosome 13q12.1. Alternatively spliced transcript variants have been found for this gene.

Immunogen information

Gene ID:

2101

Uniprot

P11474

Synonyms:

ESRRA; ERR1; ERRA; ERRalpha; ESRL1; NR3B1

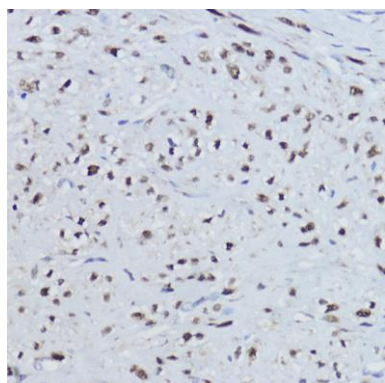
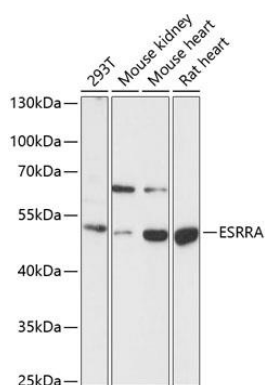
Immunogen:

Recombinant fusion protein containing a sequence corresponding to amino acids 1-423 of human ESRRA (NP_004442.3).

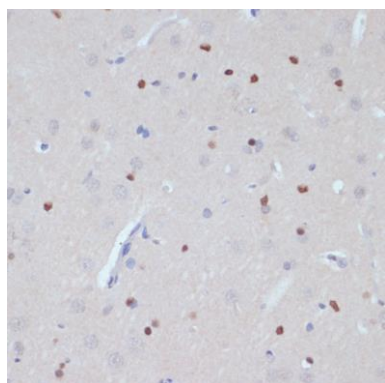
Storage:

Store at -20°C. Avoid freeze / thaw cycles. Buffer: PBS with 0.02% sodium azide, 50% glycerol, pH7.3.

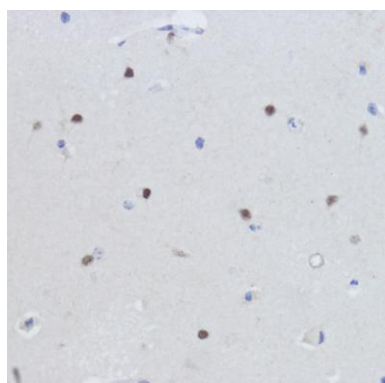
Product Images



Immunohistochemistry of paraffin-embedded human uterus using ESRRA antibody (CAB14184) at dilution of 1:200 (40x lens).



Immunohistochemistry of paraffin-embedded rat brain using ESRRA antibody (CAB14184) at dilution of 1:200 (40x lens).



Immunohistochemistry of paraffin-embedded mouse brain using ESRRA antibody (CAB14184) at dilution of 1:200 (40x lens).