

NRF1 Rabbit Polyclonal Antibody



CAB14190

Product Information

Size:

20uL, 50uL, 100uL, 200uL

Observed MW:

Refer to figures

Calculated MW:

36kDa/46kDa/53kDa/55kDa

Applications:

WB IHC IF

Reactivity:

Human, Mouse, Rat

Antibody Information

Recommended dilutions:

WB 1:500 - 1:2000 IHC 1:50
- 1:200 IF 1:50 - 1:200

Source:

Rabbit

Isotype:

IgG

Purification:

Affinity purification

Protein Background

This gene encodes a protein that homodimerizes and functions as a transcription factor which activates the expression of some key metabolic genes regulating cellular growth and nuclear genes required for respiration, heme biosynthesis, and mitochondrial DNA transcription and replication. The protein has also been associated with the regulation of neurite outgrowth. Alternative splicing results in multiple transcript variants. Confusion has occurred in bibliographic databases due to the shared symbol of NRF1 for this gene and for 'nuclear factor (erythroid-derived 2)-like 1' which has an official symbol of NFE2L1.

Immunogen information

Gene ID:

4899

Uniprot

Q16656

Synonyms:

NRF1; ALPHA-PAL

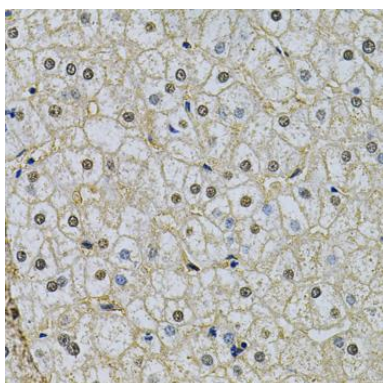
Immunogen:

Recombinant fusion protein containing a sequence corresponding to amino acids 1-300 of human NRF1 (NP_001035199.1).

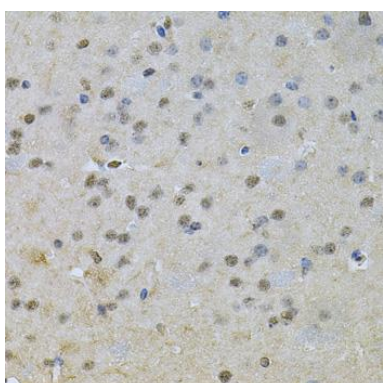
Storage:

Store at -20°C. Avoid freeze / thaw cycles. Buffer: PBS with 0.02% sodium azide, 50% glycerol, pH7.3.

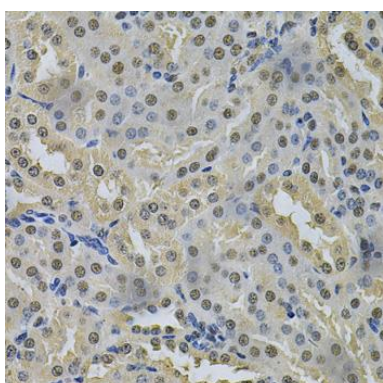
Product Images



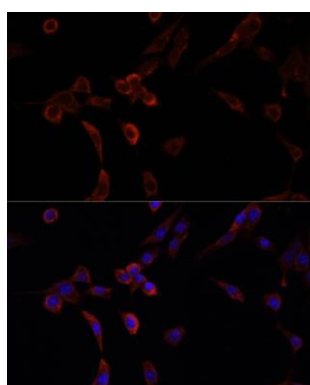
Immunohistochemistry of paraffin-embedded human liver damage using NRF1 Antibody (CAB14190) at dilution of 1:100 (40x lens).



Immunohistochemistry of paraffin-embedded mouse brain using NRF1 Antibody (CAB14190) at dilution of 1:100 (40x lens).



Immunohistochemistry of paraffin-embedded mouse kidney using NRF1 Antibody (CAB14190) at dilution of 1:100 (40x lens).



Immunofluorescence analysis of NIH/3T3 cells using NRF1 antibody (CAB14190) at dilution of 1:100. Blue: DAPI for nuclear staining.