

# RUVBL1 Rabbit Polyclonal Antibody



CAB14195

## Product Information

### Size:

20uL, 50uL, 100uL, 200uL

### Observed MW:

50kDa

### Calculated MW:

42kDa/50kDa

### Applications:

WB IF

### Reactivity:

Human, Mouse, Rat

## Protein Background

This gene encodes a protein that has both DNA-dependent ATPase and DNA helicase activities and belongs to the ATPases associated with diverse cellular activities (AAA+) protein family. The encoded protein associates with several multisubunit transcriptional complexes and with protein complexes involved in both ATP-dependent remodeling and histone modification. Alternate splicing results in multiple transcript variants.

## Immunogen information

### Gene ID:

8607

### Uniprot

Q9Y265

### Synonyms:

RUVBL1; ECP-54; ECP54; INO80H; NMP 238; NMP238; PONTIN; Pontin52; RVB1; TIH1; TIP49; TIP49A

## Antibody Information

### Recommended dilutions:

WB 1:500 - 1:2000 IF 1:50 - 1:200

### Source:

Rabbit

### Isotype:

IgG

### Purification:

Affinity purification

### Immunogen:

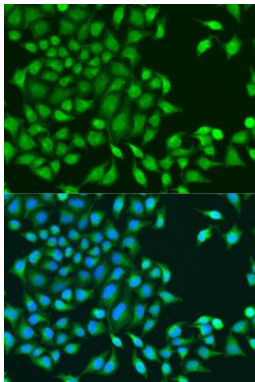
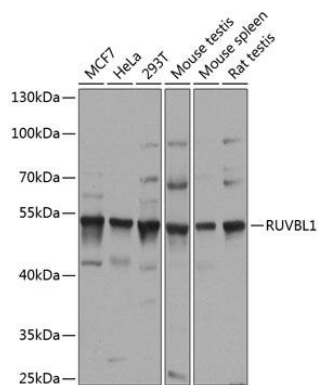
Recombinant fusion protein containing a sequence corresponding to amino acids 1-214 of human RUVBL1 (NP\_003698.1).

### Storage:

Store at -20°C. Avoid freeze / thaw cycles. Buffer: PBS with 0.02% sodium azide, 50% glycerol, pH7.3.

## Product Images

---



Western blot analysis of extracts of various cell lines, using RUVBL1 antibody (CAB14195) at 1:1000 dilution. Secondary antibody: HRP Goat Anti-Rabbit IgG (H+L) (CABS014) at 1:10000 dilution. Lysates/proteins: 25ug per lane. Blocking buffer: 3% nonfat dry milk in TBST. Detection: ECL Basic Kit (CABM00020). Exposure time: 10s.

Immunofluorescence analysis of U2OS cells using RUVBL1 antibody (CAB14195) at dilution of 1:100. Blue: DAPI for nuclear staining.