

APOA1 Rabbit Polyclonal Antibody



CAB14211

Product Information

Size:

20uL, 50uL, 100uL, 200uL

Observed MW:

31kDa

Calculated MW:

30kDa

Applications:

WB IHC

Reactivity:

Mouse, Rat

Antibody Information

Recommended dilutions:

WB 1:500 - 1:2000 IHC 1:50
- 1:200

Source:

Rabbit

Isotype:

IgG

Purification:

Affinity purification

Protein Background

This gene encodes apolipoprotein A-I, which is the major protein component of high density lipoprotein (HDL) in plasma. The encoded preprotein is proteolytically processed to generate the mature protein, which promotes cholesterol efflux from tissues to the liver for excretion, and is a cofactor for lecithin cholesterolacyltransferase (LCAT), an enzyme responsible for the formation of most plasma cholesteryl esters. This gene is closely linked with two other apolipoprotein genes on chromosome 11. Defects in this gene are associated with HDL deficiencies, including Tangier disease, and with systemic non-neuropathic amyloidosis. Alternative splicing results in multiple transcript variants, at least one of which encodes a preprotein.

Immunogen information

Gene ID:

335

Uniprot

P02647

Synonyms:

APOA1; apo(a)

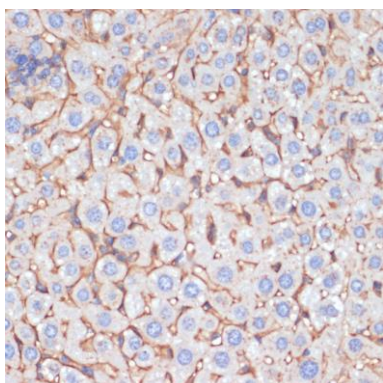
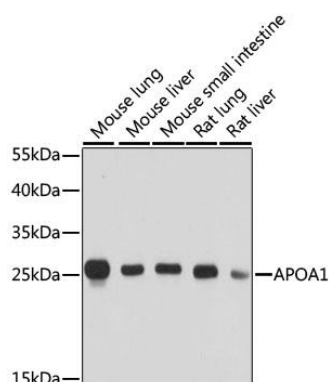
Immunogen:

Recombinant fusion protein containing a sequence corresponding to amino acids 25-267 of human APOA1 (NP_000030.1).

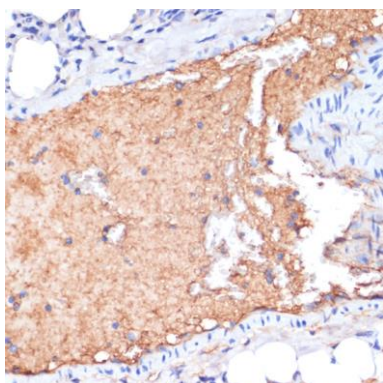
Storage:

Store at -20°C. Avoid freeze / thaw cycles. Buffer: PBS with 0.02% sodium azide, 50% glycerol, pH7.3.

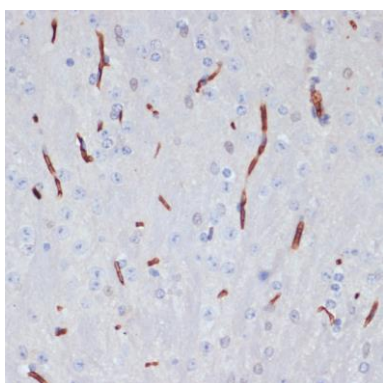
Product Images



Immunohistochemistry of paraffin-embedded mouse liver using APOA1 antibody (CAB14211) at dilution of 1:100 (40x lens).



Immunohistochemistry of paraffin-embedded mouse lung using APOA1 antibody (CAB14211) at dilution of 1:100 (40x lens).



Immunohistochemistry of paraffin-embedded mouse brain using APOA1 antibody (CAB14211) at dilution of 1:100 (40x lens).