

# SESN2 Rabbit Polyclonal Antibody



CAB14220

---

## Product Information

### Size:

20uL, 50uL, 100uL, 200uL

### Observed MW:

62kDa

### Calculated MW:

54kDa

### Applications:

WB

### Reactivity:

Human, Mouse

## Protein Background

This gene encodes a member of the sestrin family of PA26-related proteins. The encoded protein may function in the regulation of cell growth and survival. This protein may be involved in cellular response to different stress conditions.

## Immunogen information

### Gene ID:

83667

### Uniprot

P58004

### Synonyms:

SESN2; HI95; SES2; SEST2; sestrin-2

## Antibody Information

### Recommended dilutions:

WB 1:500 - 1:2000

### Source:

Rabbit

### Isotype:

IgG

### Purification:

Affinity purification

### Immunogen:

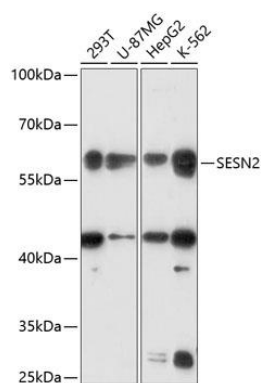
Recombinant fusion protein containing a sequence corresponding to amino acids 211-480 of human SESN2 (NP\_113647.1).

### Storage:

Store at -20°C. Avoid freeze / thaw cycles. Buffer: PBS with 0.02% sodium azide, 50% glycerol, pH7.3.

## Product Images

---



Western blot analysis of extracts of various cell lines, using SESN2 antibody (CAB14220) at 1:3000 dilution. Secondary antibody: HRP Goat Anti-Rabbit IgG (H+L) (CABS014) at 1:10000 dilution. Lysates/proteins: 25ug per lane. Blocking buffer: 3% nonfat dry milk in TBST. Detection: ECL Basic Kit (CABM00020). Exposure time: 90s.