

# AMY2B Rabbit Polyclonal Antibody



CAB14222

---

## Product Information

### Size:

20uL, 50uL, 100uL, 200uL

### Observed MW:

### Calculated MW:

42kDa/57kDa

### Applications:

IF

### Reactivity:

Human

## Antibody Information

### Recommended dilutions:

IF 1:50 - 1:100

### Source:

Rabbit

### Isotype:

IgG

### Purification:

Affinity purification

## Protein Background

Amylases are secreted proteins that hydrolyze 1, 4-alpha-glucoside bonds in oligosaccharides and polysaccharides, and thus catalyze the first step in digestion of dietary starch and glycogen. The human genome has a cluster of several amylase genes that are expressed at high levels in either salivary gland or pancreas. This gene encodes an amylase isoenzyme produced by the pancreas.

## Immunogen information

### Gene ID:

280

### Uniprot

P19961

### Synonyms:

AMY2B; AMY2; AMY3; HXA

### Immunogen:

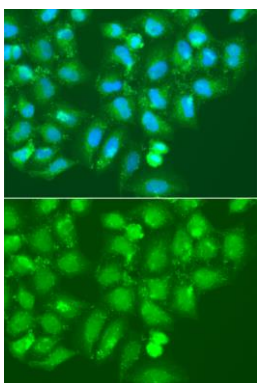
Recombinant fusion protein containing a sequence corresponding to amino acids 16-320 of human AMY2B (NP\_066188.1).

### Storage:

Store at -20°C. Avoid freeze / thaw cycles. Buffer: PBS with 0.02% sodium azide, 50% glycerol, pH7.3.

## Product Images

---



Immunofluorescence analysis of A549 cells using AMY2B antibody (CAB14222). Blue: DAPI for nuclear staining.