

CSMD2 Rabbit Polyclonal Antibody



CAB14229

Product Information

Size:

20uL, 50uL, 100uL, 200uL

Observed MW:

280kDa

Calculated MW:

380kDa

Applications:

WB

Reactivity:

Human, Mouse, Rat

Protein Background

The protein encoded by this gene is thought to be involved in the control of complement. Defects in this gene have been associated with schizophrenia. This gene may act as a tumor suppressor for colorectal cancer.

Immunogen information

Gene ID:

114784

Uniprot

Q7Z408

Synonyms:

CSMD2; dJ1007G16.1; dJ1007G16.2; dJ947L8.1

Antibody Information

Recommended dilutions:

WB 1:500 - 1:2000

Source:

Rabbit

Isotype:

IgG

Purification:

Affinity purification

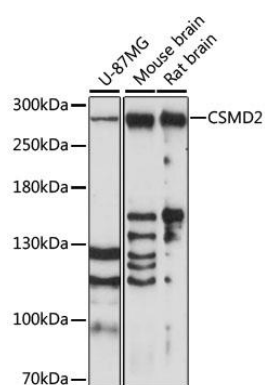
Immunogen:

A synthetic peptide corresponding to a sequence within amino acids 2050-2150 of human CSMD2 (NP_443128.2).

Storage:

Store at -20°C. Avoid freeze / thaw cycles. Buffer: PBS with 0.02% sodium azide, 50% glycerol, pH7.3.

Product Images



Western blot analysis of extracts of various cell lines, using CSMD2 antibody (CAB14229) at 1:1000 dilution. Secondary antibody: HRP Goat Anti-Rabbit IgG (H+L) (CABS014) at 1:10000 dilution. Lysates/proteins: 25ug per lane. Blocking buffer: 3% nonfat dry milk in TBST. Detection: ECL Basic Kit (CABM00020). Exposure time: 90s.