

ATP2A3 Rabbit Polyclonal Antibody



CAB14232

Product Information

Size:

20uL, 50uL, 100uL, 200uL

Observed MW:

114kDa

Calculated MW:

109kDa/112kDa/113kDa/114kDa

Applications:

WB IHC

Reactivity:

Human, Mouse

Protein Background

This gene encodes one of the SERCA Ca(2+)-ATPases, which are intracellular pumps located in the sarcoplasmic or endoplasmic reticula of muscle cells. This enzyme catalyzes the hydrolysis of ATP coupled with the translocation of calcium from the cytosol to the sarcoplasmic reticulum lumen, and is involved in calcium sequestration associated with muscular excitation and contraction. Alternative splicing results in multiple transcript variants encoding different isoforms.

Immunogen information

Gene ID:

489

Uniprot

Q93084

Synonyms:

ATP2A3; SERCA3

Antibody Information

Recommended dilutions:

WB 1:500 - 1:2000 IHC 1:50 - 1:100

Source:

Rabbit

Isotype:

IgG

Purification:

Affinity purification

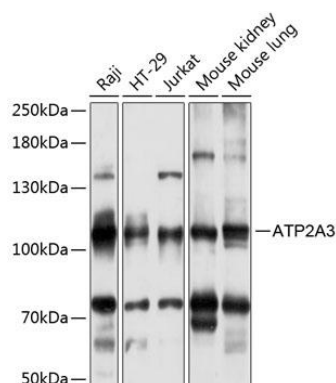
Immunogen:

Recombinant fusion protein containing a sequence corresponding to amino acids 360-600 of human ATP2A3 (NP_005164.2).

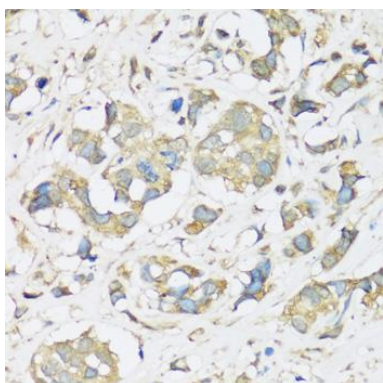
Storage:

Store at -20°C. Avoid freeze / thaw cycles. Buffer: PBS with 0.02% sodium azide, 50% glycerol, pH7.3.

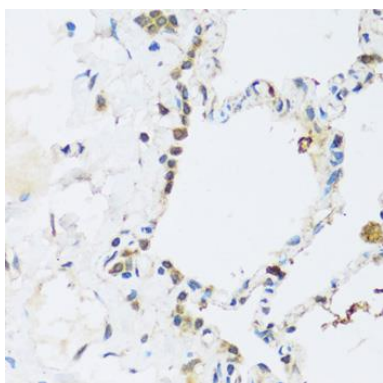
Product Images



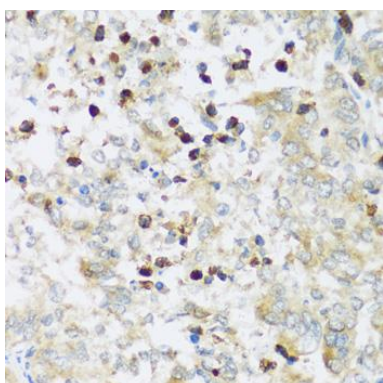
Western blot analysis of extracts of various cell lines, using ATP2A3 antibody (CAB14232) at 1:3000 dilution. Secondary antibody: HRP Goat Anti-Rabbit IgG (H+L) (CABS014) at 1:10000 dilution. Lysates/proteins: 25ug per lane. Blocking buffer: 3% nonfat dry milk in TBST. Detection: ECL Enhanced Kit (CABM00021). Exposure time: 30s.



Immunohistochemistry of paraffin-embedded human breast cancer using ATP2A3 antibody (CAB14232) at dilution of 1:100 (40x lens).



Immunohistochemistry of paraffin-embedded human lung using ATP2A3 antibody (CAB14232) at dilution of 1:100 (40x lens).



Immunohistochemistry of paraffin-embedded human uterine cancer using ATP2A3 antibody (CAB14232) at dilution of 1:100 (40x lens).