

GUCY2F Rabbit Polyclonal Antibody



CAB14242

Product Information

Size:

20uL, 50uL, 100uL, 200uL

Observed MW:

125kDa

Calculated MW:

124kDa

Applications:

WB IF

Reactivity:

Mouse, Rat

Protein Background

The protein encoded by this gene is a guanylyl cyclase found predominantly in photoreceptors in the retina. The encoded protein is thought to be involved in resynthesis of cGMP after light activation of the visual signal transduction cascade, allowing a return to the dark state. This protein is a single-pass type I membrane protein. Defects in this gene may be a cause of X-linked retinitis pigmentosa.

Immunogen information

Gene ID:

2986

Uniprot

P51841

Synonyms:

GUCY2F; CYGF; GC-F; GUC2DL; GUC2F; RETGC-2; ROS-GC2

Antibody Information

Recommended dilutions:

WB 1:500 - 1:2000 IF 1:50 - 1:100

Source:

Rabbit

Isotype:

IgG

Purification:

Affinity purification

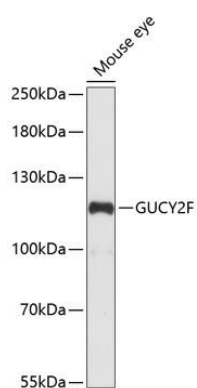
Immunogen:

Recombinant fusion protein containing a sequence corresponding to amino acids 250-460 of human GUCY2F (NP_001513.2).

Storage:

Store at -20°C. Avoid freeze / thaw cycles. Buffer: PBS with 0.02% sodium azide, 50% glycerol, pH7.3.

Product Images



Western blot analysis of extracts of mouse eye, using GUCY2F antibody (CAB14242) at 1:1000 dilution. Secondary antibody: HRP Goat Anti-Rabbit IgG (H+L) (CABS014) at 1:10000 dilution. Lysates/proteins: 25ug per lane. Blocking buffer: 3% nonfat dry milk in TBST. Detection: ECL Basic Kit (CABM00020). Exposure time: 90s.