

# SELP Rabbit Polyclonal Antibody



CAB1425

## Product Information

### Size:

20uL, 50uL, 100uL, 200uL

### Observed MW:

115kDa

### Calculated MW:

90kDa

### Applications:

WB IHC

### Reactivity:

Human, Rat

## Protein Background

This gene encodes a 140 kDa protein that is stored in the alpha-granules of platelets and Weibel-Palade bodies of endothelial cells. This protein redistributes to the plasma membrane during platelet activation and degranulation and mediates the interaction of activated endothelial cells or platelets with leukocytes. The membrane protein is a calcium-dependent receptor that binds to sialylated forms of Lewis blood group carbohydrate antigens on neutrophils and monocytes. Alternative splice variants may occur but are not well documented.

## Immunogen information

### Gene ID:

6403

### Uniprot

P16109

### Synonyms:

SELP; CD62; CD62P; GMP140; GRMP; LECAM3; PADGEM; PSEL

## Antibody Information

### Recommended dilutions:

WB 1:500 - 1:2000 IHC 1:50 - 1:200

### Source:

Rabbit

### Isotype:

IgG

### Purification:

Affinity purification

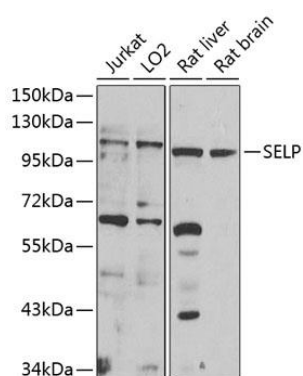
### Immunogen:

Recombinant fusion protein containing a sequence corresponding to amino acids 30-200 of human SELP (NP\_002996.2).

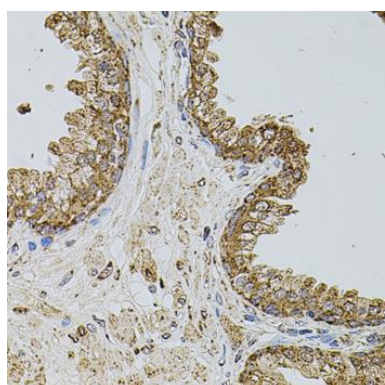
### Storage:

Store at -20°C. Avoid freeze / thaw cycles. Buffer: PBS with 0.02% sodium azide, 50% glycerol, pH7.3.

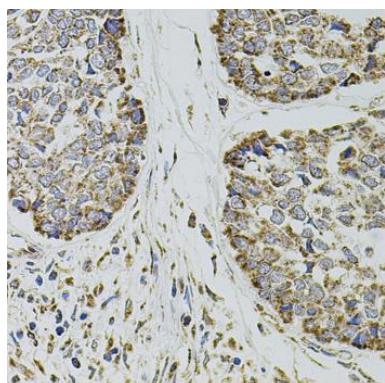
## Product Images



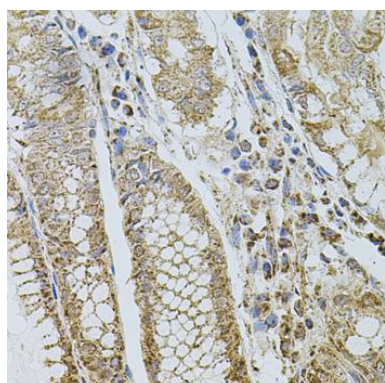
Western blot analysis of extracts of various cell lines, using SELP antibody (CAB1425) at 1:1000 dilution. Secondary antibody: HRP Goat Anti-Rabbit IgG (H+L) (CABS014) at 1:10000 dilution. Lysates/proteins: 25ug per lane. Blocking buffer: 3% nonfat dry milk in TBST. Detection: ECL Enhanced Kit (CABM00021). Exposure time: 10s.



Immunohistochemistry of paraffin-embedded human prostate using SELP antibody (CAB1425) at dilution of 1:100 (40x lens).



Immunohistochemistry of paraffin-embedded human esophageal cancer using SELP antibody (CAB1425) at dilution of 1:100 (40x lens).



Immunohistochemistry of paraffin-embedded human stomach using SELP antibody (CAB1425) at dilution of 1:100 (40x lens).