

PLP1 Rabbit Polyclonal Antibody



CAB14251

Product Information

Size:

20uL, 50uL, 100uL, 200uL

Observed MW:

34kDa

Calculated MW:

26kDa/30kDa

Applications:

WB

Reactivity:

Human, Mouse

Protein Background

This gene encodes a transmembrane proteolipid protein that is the predominant component of myelin. The encoded protein may play a role in the compaction, stabilization, and maintenance of myelin sheaths, as well as in oligodendrocyte development and axonal survival. Mutations in this gene cause Pelizaeus-Merzbacher disease and spastic paraplegia type 2. Alternatively splicing results in multiple transcript variants, including the DM20 splice variant.

Immunogen information

Gene ID:

5354

Uniprot

P60201

Synonyms:

PLP1; GPM6C; HLD1; MMPL; PLP; PLP/DM20; PMD; SPG2

Antibody Information

Recommended dilutions:

WB 1:500 - 1:2000

Source:

Rabbit

Isotype:

IgG

Purification:

Affinity purification

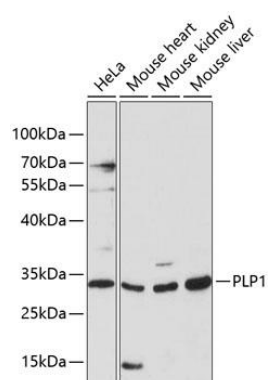
Immunogen:

Recombinant fusion protein containing a sequence corresponding to amino acids 145-210 of human PLP1 (NP_955772.1).

Storage:

Store at -20°C. Avoid freeze / thaw cycles. Buffer: PBS with 0.02% sodium azide, 50% glycerol, pH7.3.

Product Images



Western blot analysis of extracts of various cell lines, using PLP1 antibody (CAB14251) at 1:3000 dilution. Secondary antibody: HRP Goat Anti-Rabbit IgG (H+L) (CABS014) at 1:10000 dilution. Lysates/proteins: 25ug per lane. Blocking buffer: 3% nonfat dry milk in TBST. Detection: ECL Basic Kit (CABM00020). Exposure time: 90s.