

# RPL21 Rabbit Polyclonal Antibody



CAB14254

## Product Information

### Size:

20uL, 50uL, 100uL, 200uL

### Observed MW:

18kDa

### Calculated MW:

18kDa

### Applications:

WB IHC IF

### Reactivity:

Human, Mouse, Rat

## Protein Background

Ribosomes, the organelles that catalyze protein synthesis, consist of a small 40S subunit and a large 60S subunit. Together these subunits are composed of 4 RNA species and approximately 80 structurally distinct proteins. This gene encodes a ribosomal protein that is a component of the 60S subunit. The protein belongs to the L21E family of ribosomal proteins. It is located in the cytoplasm. As is typical for genes encoding ribosomal proteins, there are multiple processed pseudogenes of this gene dispersed through the genome.

## Immunogen information

### Gene ID:

6144

### Uniprot

P46778

### Synonyms:

RPL21; HYPT12; L21

## Antibody Information

### Recommended dilutions:

WB 1:500 - 1:2000 IHC 1:50  
- 1:100 IF 1:50 - 1:100

### Source:

Rabbit

### Isotype:

IgG

### Purification:

Affinity purification

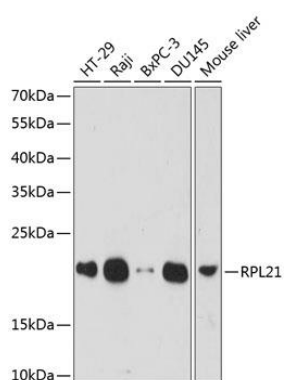
### Immunogen:

Recombinant fusion protein containing a sequence corresponding to amino acids 1-160 of human RPL21 (NP\_000973.2).

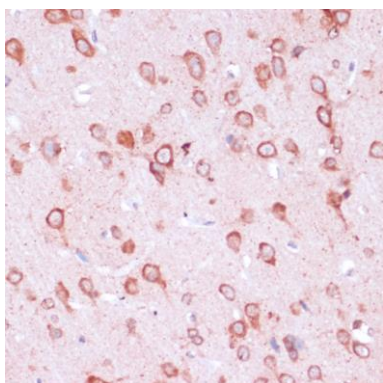
### Storage:

Store at -20°C. Avoid freeze / thaw cycles. Buffer: PBS with 0.02% sodium azide, 50% glycerol, pH7.3.

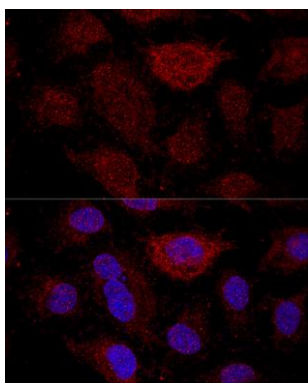
## Product Images



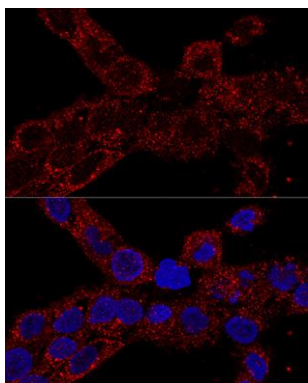
Western blot analysis of extracts of various cell lines, using RPL21 antibody (CAB14254) at 1:1000 dilution. Secondary antibody: HRP Goat Anti-Rabbit IgG (H+L) (CABS014) at 1:10000 dilution. Lysates/proteins: 25ug per lane. Blocking buffer: 3% nonfat dry milk in TBST. Detection: ECL Basic Kit (CABM00020). Exposure time: 60s.



Immunohistochemistry of paraffin-embedded rat brain using RPL21 antibody (CAB14254) at dilution of 1:100 (40x lens).



Confocal immunofluorescence analysis of HeLa cells using RPL21 antibody (CAB14254) at dilution of 1:200. Blue: DAPI for nuclear staining.



Confocal immunofluorescence analysis of A-431 cells using RPL21 antibody (CAB14254) at dilution of 1:100. Blue: DAPI for nuclear staining.