

# RPL24 Rabbit Polyclonal Antibody



CAB14255

## Product Information

### Size:

20uL, 50uL, 100uL, 200uL

### Observed MW:

18kDa

### Calculated MW:

17kDa

### Applications:

WB IHC IF

### Reactivity:

Human, Mouse, Rat

## Antibody Information

### Recommended dilutions:

WB 1:500 - 1:2000 IHC 1:50  
- 1:200 IF 1:50 - 1:100

### Source:

Rabbit

### Isotype:

IgG

### Purification:

Affinity purification

## Protein Background

Ribosomes, the organelles that catalyze protein synthesis, consist of a small 40S subunit and a large 60S subunit. Together these subunits are composed of 4 RNA species and approximately 80 structurally distinct proteins. This gene encodes a ribosomal protein that is a component of the 60S subunit. The protein belongs to the L24E family of ribosomal proteins. It is located in the cytoplasm. This gene has been referred to as ribosomal protein L30 because the encoded protein shares amino acid identity with the L30 ribosomal proteins from *S. cerevisiae*; however, its official name is ribosomal protein L24. As is typical for genes encoding ribosomal proteins, there are multiple processed pseudogenes of this gene dispersed through the genome.

## Immunogen information

### Gene ID:

6152

### Uniprot

P83731

### Synonyms:

RPL24; HEL-S-310; L24

### Immunogen:

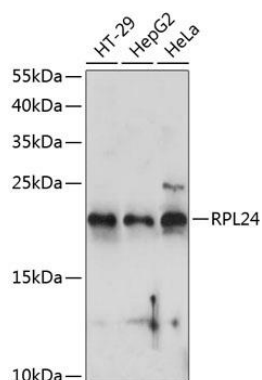
Recombinant fusion protein containing a sequence corresponding to amino acids 38-157 of human RPL24 (NP\_000977.1).

### Storage:

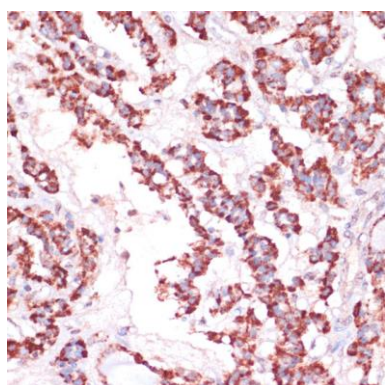
Store at -20°C. Avoid freeze / thaw cycles. Buffer: PBS with 0.02% sodium azide, 50% glycerol, pH7.3.

## Product Images

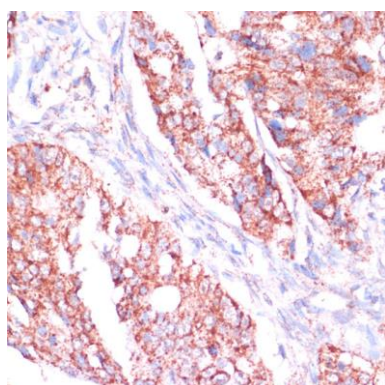
---



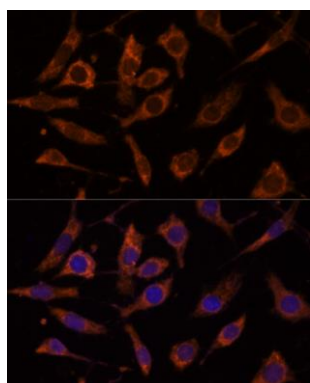
Western blot analysis of extracts of various cell lines, using RPL24 antibody (CAB14255) at 1:1000 dilution. Secondary antibody: HRP Goat Anti-Rabbit IgG (H+L) (CABS014) at 1:10000 dilution. Lysates/proteins: 25ug per lane. Blocking buffer: 3% nonfat dry milk in TBST. Detection: ECL Basic Kit (CABM00020). Exposure time: 60s.



Immunohistochemistry of paraffin-embedded human thyroid cancer using RPL24 antibody (CAB14255) at dilution of 1:100 (40x lens).



Immunohistochemistry of paraffin-embedded human colon carcinoma using RPL24 antibody (CAB14255) at dilution of 1:100 (40x lens).



Immunofluorescence analysis of L929 cells using RPL24 Polyclonal Antibody (CAB14255) at dilution of 1:100 (40x lens). Blue: DAPI for nuclear staining.