

MLLT10 Rabbit Polyclonal Antibody



CAB14260

Product Information

Size:

20uL, 50uL, 100uL, 200uL

Observed MW:

113kDa

Calculated MW:

13kDa/20kDa/109kDa/113kDa

Applications:

WB

Reactivity:

Human, Mouse

Antibody Information

Recommended dilutions:

WB 1:500 - 1:2000

Source:

Rabbit

Isotype:

IgG

Purification:

Affinity purification

Protein Background

This gene encodes a transcription factor and has been identified as a partner gene involved in several chromosomal rearrangements resulting in various leukemias. Multiple transcript variants encoding different isoforms have been found for this gene.

Immunogen information

Gene ID:

8028

Uniprot

P55197

Synonyms:

MLLT10; AF10

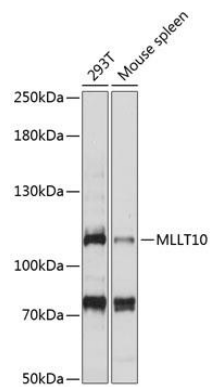
Immunogen:

Recombinant fusion protein containing a sequence corresponding to amino acids 250-500 of human MLLT10 (NP_001182555.1).

Storage:

Store at -20°C. Avoid freeze / thaw cycles. Buffer: PBS with 0.02% sodium azide, 50% glycerol, pH7.3.

Product Images



Western blot analysis of extracts of various cell lines, using MLLT10 antibody (CAB14260) at 1:1000 dilution. Secondary antibody: HRP Goat Anti-Rabbit IgG (H+L) (CABS014) at 1:10000 dilution. Lysates/proteins: 25ug per lane. Blocking buffer: 3% nonfat dry milk in TBST. Detection: ECL Basic Kit (CABM00020). Exposure time: 5s.