

TNFRSF25 Rabbit Polyclonal Antibody



CAB14261

Product Information

Size:

20uL, 50uL, 100uL, 200uL

Observed MW:

60kDa

Calculated MW:

13-29kDa/40-45kDa

Applications:

WB IF

Reactivity:

Human, Mouse, Rat

Antibody Information

Recommended dilutions:

WB 1:500 - 1:2000 IF 1:50 - 1:200

Source:

Rabbit

Isotype:

IgG

Purification:

Affinity purification

Protein Background

The protein encoded by this gene is a member of the TNF-receptor superfamily. This receptor is expressed preferentially in the tissues enriched in lymphocytes, and it may play a role in regulating lymphocyte homeostasis. This receptor has been shown to stimulate NF-kappa B activity and regulate cell apoptosis. The signal transduction of this receptor is mediated by various death domain containing adaptor proteins. Knockout studies in mice suggested the role of this gene in the removal of self-reactive T cells in the thymus. Multiple alternatively spliced transcript variants of this gene encoding distinct isoforms have been reported, most of which are potentially secreted molecules. The alternative splicing of this gene in B and T cells encounters a programmed change upon T-cell activation, which predominantly produces full-length, membrane bound isoforms, and is thought to be involved in controlling lymphocyte proliferation induced by T-cell activation.

Immunogen information

Gene ID:

8718

Uniprot

Q93038

Synonyms:

TNFRSF25; APO-3; DDR3; DR3; LARD; TNFRSF12; TR3; TRAMP; WSL-1; WSL-LR

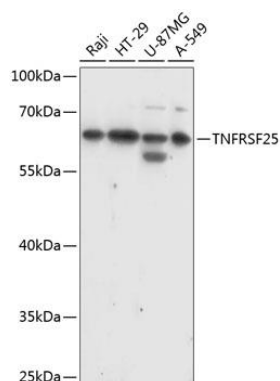
Immunogen:

Recombinant fusion protein containing a sequence corresponding to amino acids 240-426 of human TNFRSF25 (NP_683866.1).

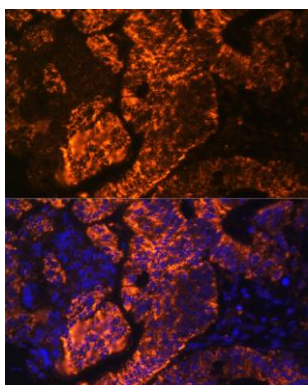
Storage:

Store at -20°C. Avoid freeze / thaw cycles. Buffer: PBS with 0.02% sodium azide, 50% glycerol, pH7.3.

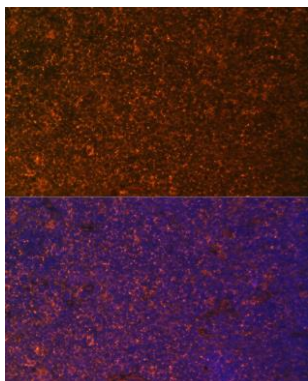
Product Images



Western blot analysis of extracts of various cell lines, using TNFRSF25 antibody (CAB14261) at 1:1000 dilution. Secondary antibody: HRP Goat Anti-Rabbit IgG (H+L) (CABS014) at 1:10000 dilution. Lysates/proteins: 25ug per lane. Blocking buffer: 3% nonfat dry milk in TBST. Detection: ECL Basic Kit (CABM00020). Exposure time: 60s.



Immunofluorescence analysis of human colon carcinoma cells using TNFRSF25 antibody (CAB14261) at dilution of 1:100. Blue: DAPI for nuclear staining.



Immunofluorescence analysis of rat breast cells using TNFRSF25 antibody (CAB14261) at dilution of 1:100. Blue: DAPI for nuclear staining.