

DLL1 Rabbit Polyclonal Antibody



CAB14277

Product Information

Size:

20uL, 50uL, 100uL, 200uL

Observed MW:

78kDa

Calculated MW:

27kDa/78kDa

Applications:

WB IHC

Reactivity:

Human, Mouse, Rat

Protein Background

DLL1 is a human homolog of the Notch Delta ligand and is a member of the delta/serrate/jagged family. It plays a role in mediating cell fate decisions during hematopoiesis. It may play a role in cell-to-cell communication.

Immunogen information

Gene ID:

28514

Uniprot

O00548

Synonyms:

DLL1; DELTA1; DL1; Delta

Antibody Information

Recommended dilutions:

WB 1:500 - 1:2000 IHC 1:50
- 1:200

Source:

Rabbit

Isotype:

IgG

Purification:

Affinity purification

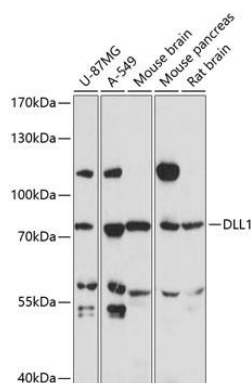
Immunogen:

Recombinant fusion protein containing a sequence corresponding to amino acids 573-723 of human DLL1 (NP_005609.3).

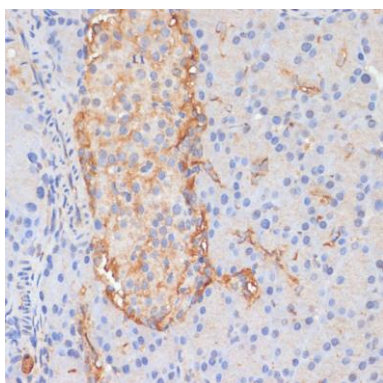
Storage:

Store at -20°C. Avoid freeze / thaw cycles. Buffer: PBS with 0.02% sodium azide, 50% glycerol, pH7.3.

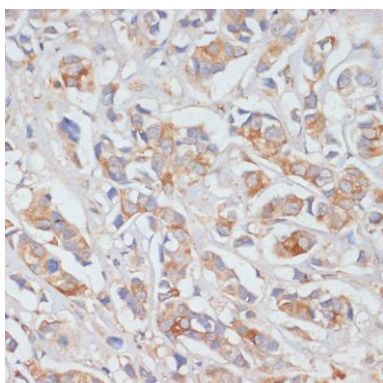
Product Images



Western blot analysis of extracts of various cell lines, using DLL1 antibody (CAB14277) at 1:3000 dilution. Secondary antibody: HRP Goat Anti-Rabbit IgG (H+L) (CABS014) at 1:10000 dilution. Lysates/proteins: 25ug per lane. Blocking buffer: 3% nonfat dry milk in TBST. Detection: ECL Basic Kit (CABM00020). Exposure time: 30s.



Immunohistochemistry of paraffin-embedded rat pancreas using DLL1 antibody (CAB14277) at dilution of 1:100 (40x lens).



Immunohistochemistry of paraffin-embedded human breast cancer using DLL1 antibody (CAB14277) at dilution of 1:100 (40x lens).