

PRKAG2 Rabbit Polyclonal Antibody



CAB14280

Product Information

Size:

20uL, 50uL, 100uL, 200uL

Observed MW:

63kDa

Calculated MW:

37kDa/58kDa/63kDa

Applications:

WB IHC

Reactivity:

Mouse, Rat

Protein Background

AMP-activated protein kinase (AMPK) is a heterotrimeric protein composed of a catalytic alpha subunit, a noncatalytic beta subunit, and a noncatalytic regulatory gamma subunit. Various forms of each of these subunits exist, encoded by different genes. AMPK is an important energy-sensing enzyme that monitors cellular energy status and functions by inactivating key enzymes involved in regulating de novo biosynthesis of fatty acid and cholesterol. This gene is a member of the AMPK gamma subunit family. Mutations in this gene have been associated with Wolff-Parkinson-White syndrome, familial hypertrophic cardiomyopathy, and glycogen storage disease of the heart. Alternate transcriptional splice variants, encoding different isoforms, have been characterized.

Immunogen information

Gene ID:

51422

Uniprot

Q9UGJ0

Antibody Information

Recommended dilutions:

WB 1:500 - 1:2000 IHC 1:50
- 1:200

Source:

Rabbit

Isotype:

IgG

Purification:

Affinity purification

Synonyms:

PRKAG2; AAKG; AAKG2; CMH6; H91620p; WPWS

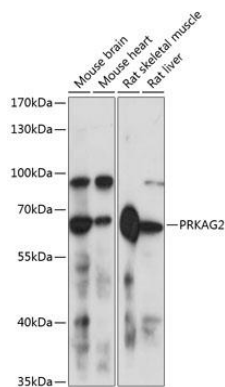
Immunogen:

Recombinant fusion protein containing a sequence corresponding to amino acids 1-328 of human PRKAG2 (NP_077747.1).

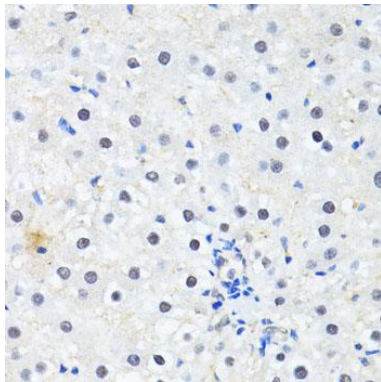
Storage:

Store at -20°C. Avoid freeze / thaw cycles. Buffer: PBS with 0.02% sodium azide, 50% glycerol, pH7.3.

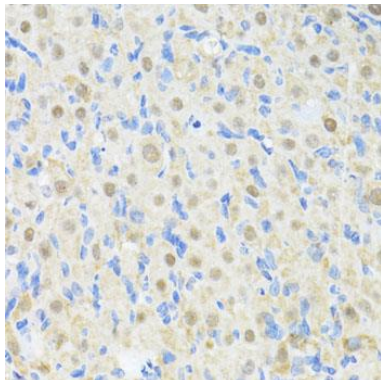
Product Images



Western blot analysis of extracts of various cell lines, using PRKAG2 antibody (CAB14280) at 1:3000 dilution. Secondary antibody: HRP Goat Anti-Rabbit IgG (H+L) (CABS014) at 1:10000 dilution. Lysates/proteins: 25ug per lane. Blocking buffer: 3% nonfat dry milk in TBST. Detection: ECL Enhanced Kit (CABM00021). Exposure time: 1s.



Immunohistochemistry of paraffin-embedded rat liver using PRKAG2 antibody (CAB14280) at dilution of 1:100 (40x lens).



Immunohistochemistry of paraffin-embedded rat ovary using PRKAG2 antibody (CAB14280) at dilution of 1:100 (40x lens).