

# SPATA7 Rabbit Polyclonal Antibody



CAB14285

## Product Information

### Size:

20uL, 50uL, 100uL, 200uL

### Observed MW:

75kDa

### Calculated MW:

51kDa/64kDa/67kDa

### Applications:

WB IHC

### Reactivity:

Human, Mouse, Rat

## Protein Background

This gene, originally isolated from testis, is also expressed in retina. Mutations in this gene are associated with Leber congenital amaurosis and juvenile retinitis pigmentosa. Alternatively spliced transcript variants encoding different isoforms have been found for this gene.

## Immunogen information

### Gene ID:

55812

### Uniprot

Q9P0W8

### Synonyms:

SPATA7; HEL-S-296; HSD-3.1; HSD3; LCA3

## Antibody Information

### Recommended dilutions:

WB 1:500 - 1:2000 IHC 1:50  
- 1:200

### Source:

Rabbit

### Isotype:

IgG

### Purification:

Affinity purification

### Immunogen:

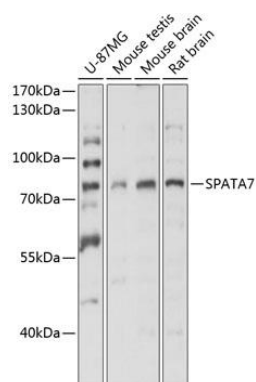
Recombinant fusion protein containing a sequence corresponding to amino acids 300-599 of human SPATA7 (NP\_060888.2).

### Storage:

Store at -20°C. Avoid freeze / thaw cycles. Buffer: PBS with 0.02% sodium azide, 50% glycerol, pH7.3.

## Product Images

---



Western blot analysis of extracts of various cell lines, using SPATA7 antibody (CAB14285) at 1:3000 dilution. Secondary antibody: HRP Goat Anti-Rabbit IgG (H+L) (CABS014) at 1:10000 dilution. Lysates/proteins: 25ug per lane. Blocking buffer: 3% nonfat dry milk in TBST. Detection: ECL Basic Kit (CABM00020). Exposure time: 10s.