

IQWD1 Rabbit Polyclonal Antibody



CAB14286

Product Information

Size:

20uL, 50uL, 100uL, 200uL

Observed MW:

105kDa

Calculated MW:

96kDa/98kDa/103kDa/106kDa

Applications:

WB

Reactivity:

Human

Antibody Information

Recommended dilutions:

WB 1:500 - 1:2000

Source:

Rabbit

Isotype:

IgG

Purification:

Affinity purification

Protein Background

The protein encoded by this gene is a ligand-dependent coactivator of nuclear receptors, including nuclear receptor subfamily 3 group C member 1 (NR3C1), glucocorticoid receptor (GR), and androgen receptor (AR). The encoded protein and DNA damage binding protein 2 (DDB2) may act as tumor promoters and tumor suppressors, respectively, by regulating the level of androgen receptor in prostate tissues. In addition, this protein can act with glucocorticoid receptor to promote human papillomavirus gene expression.

Immunogen information

Gene ID:

55827

Uniprot

Q58WW2

Synonyms:

DCAF6; 1200006M05Rik; ARCAP; IQWD1; MSTP055; NRIP; PC326

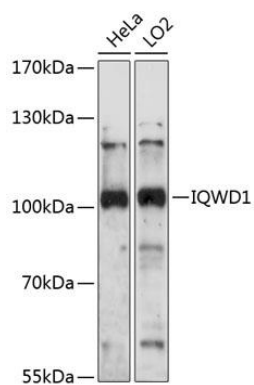
Immunogen:

Recombinant fusion protein containing a sequence corresponding to amino acids 460-650 of human IQWD1 (NP_001017977.1).

Storage:

Store at -20°C. Avoid freeze / thaw cycles. Buffer: PBS with 0.02% sodium azide, 50% glycerol, pH7.3.

Product Images



Western blot analysis of extracts of various cell lines, using IQWD1 antibody (CAB14286) at 1:1000 dilution. Secondary antibody: HRP Goat Anti-Rabbit IgG (H+L) (CABS014) at 1:10000 dilution. Lysates/proteins: 25ug per lane. Blocking buffer: 3% nonfat dry milk in TBST. Detection: ECL Basic Kit (CABM00020). Exposure time: 30s.