

NDUFA4L2 Rabbit Polyclonal Antibody



CAB14288

Product Information

Size:

20uL, 50uL, 100uL, 200uL

Observed MW:

12kDa

Calculated MW:

9kDa

Applications:

WB IHC IF

Reactivity:

Human, Mouse, Rat

Antibody Information

Recommended dilutions:

WB 1:500 - 1:2000 IHC 1:50
- 1:200 IF 1:50 - 1:200

Source:

Rabbit

Isotype:

IgG

Purification:

Affinity purification

Protein Background

Immunogen information

Gene ID:

56901

Uniprot

Q9NRX3

Synonyms:

NDUFA4L2; NUOMS; NDUFA4

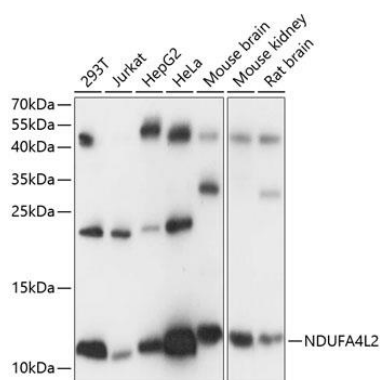
Immunogen:

Recombinant fusion protein containing a sequence corresponding to amino acids 1-87 of human NDUFA4L2 (NP_064527.1).

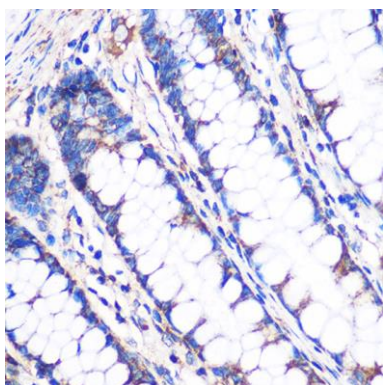
Storage:

Store at -20°C. Avoid freeze / thaw cycles. Buffer: PBS with 0.02% sodium azide, 50% glycerol, pH7.3.

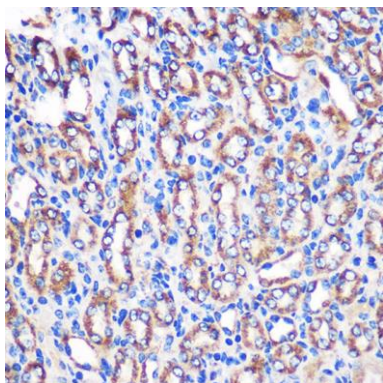
Product Images



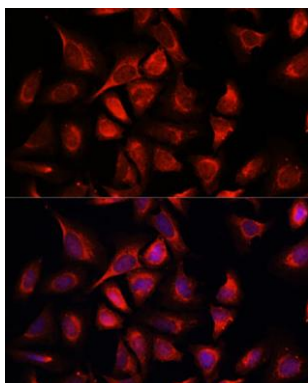
Western blot analysis of extracts of various cell lines, using NDUFA4L2 antibody (CAB14288) at 1:1000 dilution. Secondary antibody: HRP Goat Anti-Rabbit IgG (H+L) (CABS014) at 1:10000 dilution. Lysates/proteins: 25ug per lane. Blocking buffer: 3% nonfat dry milk in TBST. Detection: ECL Basic Kit (CABM00020). Exposure time: 5s.



Immunohistochemistry of paraffin-embedded Human colon using NDUFA4L2 Rabbit pAb (CAB14288) at dilution of 1:100 (40x lens).



Immunohistochemistry of paraffin-embedded Mouse kidney using NDUFA4L2 Rabbit pAb (CAB14288) at dilution of 1:100 (40x lens).



Immunofluorescence analysis of C6 cells using NDUFA4L2 antibody (CAB14288) at dilution of 1:100. Blue: DAPI for nuclear staining.