

ZSCAN31 Rabbit Polyclonal Antibody



CAB14290

Product Information

Size:

20uL, 50uL, 100uL, 200uL

Observed MW:

47kDa

Calculated MW:

28kDa/47kDa

Applications:

WB

Reactivity:

Rat

Antibody Information

Recommended dilutions:

WB 1:500 - 1:2000

Source:

Rabbit

Isotype:

IgG

Purification:

Affinity purification

Protein Background

This gene encodes a protein containing multiple C2H2-type zinc finger motifs. Alternative splicing results in multiple transcript variants.

Immunogen information

Gene ID:

64288

Uniprot

Q96LW9

Synonyms:

ZSCAN31; ZNF20-Lp; ZNF310P; ZNF323

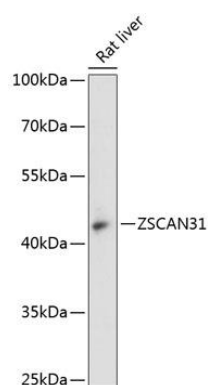
Immunogen:

Recombinant fusion protein containing a sequence corresponding to amino acids 202-406 of human ZSCAN31 (NP_112161.3).

Storage:

Store at -20°C. Avoid freeze / thaw cycles. Buffer: PBS with 0.02% sodium azide, 50% glycerol, pH7.3.

Product Images



Western blot analysis of extracts of rat liver, using ZSCAN31 antibody (CAB14290) at 1:3000 dilution. Secondary antibody: HRP Goat Anti-Rabbit IgG (H+L) (CABS014) at 1:10000 dilution. Lysates/proteins: 25ug per lane. Blocking buffer: 3% nonfat dry milk in TBST. Detection: ECL Basic Kit (CABM00020). Exposure time: 90s.