

DCLRE1A Rabbit Polyclonal Antibody



CAB14312

Product Information

Size:

20uL, 50uL, 100uL, 200uL

Observed MW:

116kDa

Calculated MW:

116kDa

Applications:

WB

Reactivity:

Human

Protein Background

This gene encodes a conserved protein that is involved in the repair of DNA interstrand cross-links. DNA cross-links suppress transcription, replication, and DNA segregation. The encoded protein is a regulator of the mitotic cell cycle checkpoint. Alternative splicing results in multiple transcript variants.

Immunogen information

Gene ID:

9937

Uniprot

Q6PJP8

Synonyms:

DCLRE1A; PSO2; SNM1; SNM1A

Antibody Information

Recommended dilutions:

WB 1:500 - 1:2000

Source:

Rabbit

Isotype:

IgG

Purification:

Affinity purification

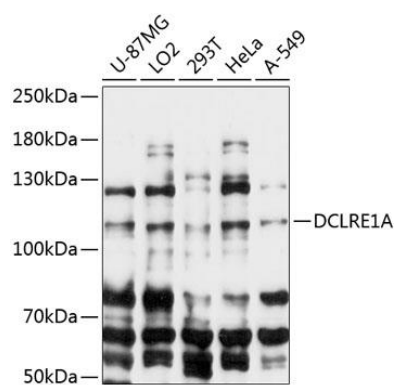
Immunogen:

Recombinant fusion protein containing a sequence corresponding to amino acids 1-300 of human DCLRE1A (NP_001258745.1).

Storage:

Store at -20°C. Avoid freeze / thaw cycles. Buffer: PBS with 0.02% sodium azide, 50% glycerol, pH7.3.

Product Images



Western blot analysis of extracts of various cell lines, using DCLRE1A antibody (CAB14312) at 1:3000 dilution. Secondary antibody: HRP Goat Anti-Rabbit IgG (H+L) (CABS014) at 1:10000 dilution. Lysates/proteins: 25ug per lane. Blocking buffer: 3% nonfat dry milk in TBST. Detection: ECL Basic Kit (CABM00020). Exposure time: 30s.