

HTRA4 Rabbit Polyclonal Antibody



CAB14314

Product Information

Size:

20uL, 50uL, 100uL, 200uL

Observed MW:

51kDa

Calculated MW:

50kDa

Applications:

WB

Reactivity:

Human, Mouse, Rat

Protein Background

This gene encodes a member of the HtrA family of proteases. The encoded protein contains a putative signal peptide, an insulin growth factor binding domain, a Kazal protease inhibitor domain, a conserved trypsin domain and a PDZ domain. Based on studies on other related family members, this enzyme may function as a secreted oligomeric chaperone protease to degrade misfolded secretory proteins. Other human HtrA proteins have been implicated in arthritis, tumor suppression, unfolded stress response, apoptosis, and aging.

Immunogen information

Gene ID:

203100

Uniprot

P83105

Synonyms:

HTRA4

Antibody Information

Recommended dilutions:

WB 1:500 - 1:2000

Source:

Rabbit

Isotype:

IgG

Purification:

Affinity purification

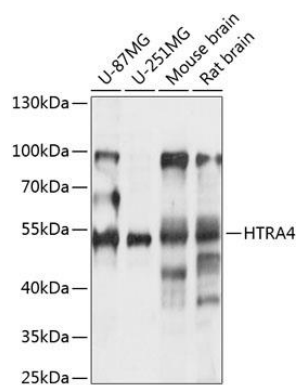
Immunogen:

Recombinant fusion protein containing a sequence corresponding to amino acids 32-200 of human HTRA4 (NP_710159.1).

Storage:

Store at -20°C. Avoid freeze / thaw cycles. Buffer: PBS with 0.02% sodium azide, 50% glycerol, pH7.3.

Product Images



Western blot analysis of extracts of various cell lines, using HTRA4 antibody (CAB14314) at 1:1000 dilution. Secondary antibody: HRP Goat Anti-Rabbit IgG (H+L) (CABS014) at 1:10000 dilution. Lysates/proteins: 25ug per lane. Blocking buffer: 3% nonfat dry milk in TBST. Detection: ECL Basic Kit (CABM00020). Exposure time: 90s.