

PARP12 Rabbit Polyclonal Antibody



CAB14317

Product Information

Size:

20uL, 50uL, 100uL, 200uL

Observed MW:

79kDa

Calculated MW:

79kDa

Applications:

WB

Reactivity:

Human, Mouse, Rat

Antibody Information

Recommended dilutions:

WB 1:500 - 1:2000

Source:

Rabbit

Isotype:

IgG

Purification:

Affinity purification

Protein Background

Immunogen information

Gene ID:

64761

Uniprot

Q9H0J9

Synonyms:

PARP12; ARTD12; MST109; MSTP109; ZC3H1; ZC3HDC1

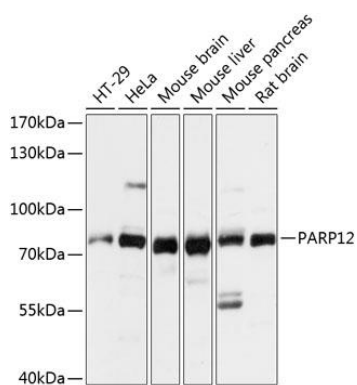
Immunogen:

Recombinant fusion protein containing a sequence corresponding to amino acids 462-701 of human PARP12 (NP_073587.1).

Storage:

Store at -20°C. Avoid freeze / thaw cycles. Buffer: PBS with 0.02% sodium azide, 50% glycerol, pH7.3.

Product Images



Western blot analysis of extracts of various cell lines, using PARP12 antibody (CAB14317) at 1:3000 dilution. Secondary antibody: HRP Goat Anti-Rabbit IgG (H+L) (CABS014) at 1:10000 dilution. Lysates/proteins: 25ug per lane. Blocking buffer: 3% nonfat dry milk in TBST. Detection: ECL Basic Kit (CABM00020). Exposure time: 10s.