

# PLAGL2 Rabbit Polyclonal Antibody



CAB14318

---

## Product Information

### Size:

20uL, 50uL, 100uL, 200uL

### Observed MW:

60kDa

### Calculated MW:

54kDa

### Applications:

WB

### Reactivity:

Human

## Antibody Information

### Recommended dilutions:

WB 1:500 - 1:2000

### Source:

Rabbit

### Isotype:

IgG

### Purification:

Affinity purification

## Protein Background

Pleiomorphic adenoma gene-like 2 is a zinc-finger protein that recognizes DNA and/or RNA.

## Immunogen information

### Gene ID:

5326

### Uniprot

Q9UPG8

### Synonyms:

PLAGL2; ZNF900

### Immunogen:

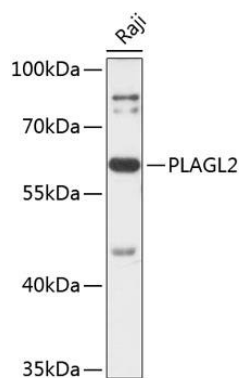
Recombinant fusion protein containing a sequence corresponding to amino acids 240-470 of human PLAGL2 (NP\_002648.1).

### Storage:

Store at -20°C. Avoid freeze / thaw cycles. Buffer: PBS with 0.02% sodium azide, 50% glycerol, pH7.3.

## Product Images

---



Western blot analysis of extracts of Raji cells, using PLAGL2 antibody (CAB14318) at 1:3000 dilution. Secondary antibody: HRP Goat Anti-Rabbit IgG (H+L) (CABS014) at 1:10000 dilution. Lysates/proteins: 25ug per lane. Blocking buffer: 3% nonfat dry milk in TBST. Detection: ECL Basic Kit (CABM00020). Exposure time: 90s.