

PRSS12 Rabbit Polyclonal Antibody



CAB14319

Product Information

Size:

20uL, 50uL, 100uL, 200uL

Observed MW:

97kDa

Calculated MW:

97kDa

Applications:

WB

Reactivity:

Mouse, Rat

Protein Background

This gene encodes a member of the trypsin family of serine proteases. Studies in mouse suggest that the encoded enzyme may be involved in structural reorganizations associated with learning and memory. The enzyme is also expressed in Leydig cells in the testis, but its function in this tissue is unknown. Defects in this gene are a cause of mental retardation autosomal recessive type 1 (MRT1).

Immunogen information

Gene ID:

8492

Uniprot

P56730

Synonyms:

PRSS12; BSSP-3; BSSP3; MRT1

Antibody Information

Recommended dilutions:

WB 1:500 - 1:2000

Source:

Rabbit

Isotype:

IgG

Purification:

Affinity purification

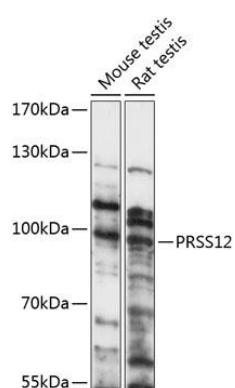
Immunogen:

Recombinant fusion protein containing a sequence corresponding to amino acids 21-300 of human PRSS12 (NP_003610.2).

Storage:

Store at -20°C. Avoid freeze / thaw cycles. Buffer: PBS with 0.02% sodium azide, 50% glycerol, pH7.3.

Product Images



Western blot analysis of extracts of various cell lines, using PRSS12 antibody (CAB14319) at 1:1000 dilution. Secondary antibody: HRP Goat Anti-Rabbit IgG (H+L) (CABS014) at 1:10000 dilution. Lysates/proteins: 25ug per lane. Blocking buffer: 3% nonfat dry milk in TBST. Detection: ECL Basic Kit (CABM00020). Exposure time: 30s.