

ZNF703 Rabbit Polyclonal Antibody



CAB14325

Product Information

Size:

20uL, 50uL, 100uL, 200uL

Observed MW:

58kDa

Calculated MW:

58kDa

Applications:

WB IHC IF

Reactivity:

Human, Mouse, Rat

Antibody Information

Recommended dilutions:

WB 1:500 - 1:2000 IHC 1:50
- 1:200 IF 1:50 - 1:200

Source:

Rabbit

Isotype:

IgG

Purification:

Affinity purification

Protein Background

Immunogen information

Gene ID:

80139

Uniprot

Q9H7S9

Synonyms:

ZNF703; NLZ1; ZEPP01; ZNF503L; ZPO1

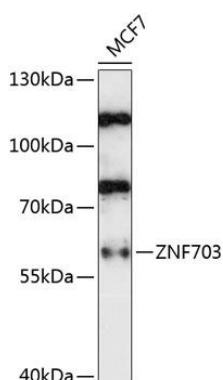
Immunogen:

Recombinant fusion protein containing a sequence corresponding to amino acids 160-290 of human ZNF703 (NP_079345.1).

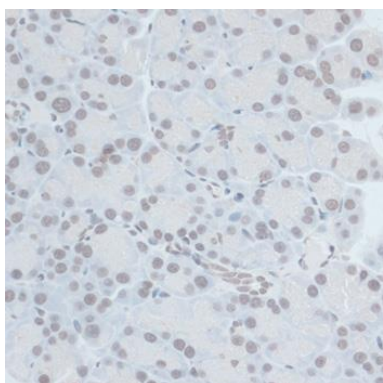
Storage:

Store at -20°C. Avoid freeze / thaw cycles. Buffer: PBS with 0.02% sodium azide, 50% glycerol, pH7.3.

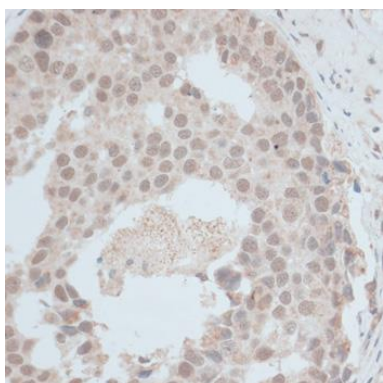
Product Images



Western blot analysis of extracts of MCF7 cells, using ZNF703 antibody (CAB14325) at 1:1000 dilution. Secondary antibody: HRP Goat Anti-Rabbit IgG (H+L) (CABS014) at 1:10000 dilution. Lysates/proteins: 25ug per lane. Blocking buffer: 3% nonfat dry milk in TBST. Detection: ECL Basic Kit (CABM00020). Exposure time: 30s.



Immunohistochemistry of paraffin-embedded rat pancreas using ZNF703 antibody (CAB14325) at dilution of 1:100 (40x lens).



Immunohistochemistry of paraffin-embedded human breast cancer using ZNF703 antibody (CAB14325) at dilution of 1:100 (40x lens).