

# TIPARP Rabbit Polyclonal Antibody



CAB14329

## Product Information

### Size:

20uL, 50uL, 100uL, 200uL

### Observed MW:

76kDa

### Calculated MW:

76kDa

### Applications:

WB

### Reactivity:

Human, Mouse

## Protein Background

This gene encodes a member of the poly(ADP-ribose) polymerase superfamily. Studies of the mouse ortholog have shown that the encoded protein catalyzes histone poly(ADP-ribosyl)ation and may be involved in T-cell function. Alternative splicing results in multiple transcript variants.

## Immunogen information

### Gene ID:

25976

### Uniprot

Q7Z3E1

### Synonyms:

TIPARP; ARTD14; PARP7; pART14

## Antibody Information

### Recommended dilutions:

WB 1:500 - 1:2000

### Source:

Rabbit

### Isotype:

IgG

### Purification:

Affinity purification

### Immunogen:

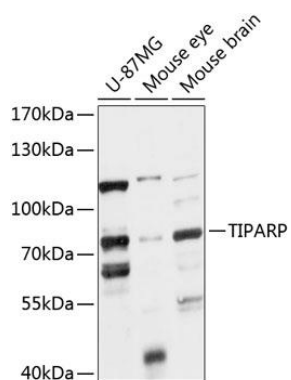
Recombinant fusion protein containing a sequence corresponding to amino acids 1-320 of human TIPARP (NP\_056323.2).

### Storage:

Store at -20°C. Avoid freeze / thaw cycles. Buffer: PBS with 0.02% sodium azide, 50% glycerol, pH7.3.

## Product Images

---



Western blot analysis of extracts of various cell lines, using TIPARP antibody (CAB14329) at 1:1000 dilution. Secondary antibody: HRP Goat Anti-Rabbit IgG (H+L) (CABS014) at 1:10000 dilution. Lysates/proteins: 25ug per lane. Blocking buffer: 3% nonfat dry milk in TBST. Detection: ECL Basic Kit (CABM00020). Exposure time: 5s.