

# WBSCR16 Rabbit Polyclonal Antibody



CAB14330

---

## Product Information

### Size:

20uL, 50uL, 100uL, 200uL

### Observed MW:

50kDa

### Calculated MW:

38kDa/48kDa/49kDa

### Applications:

WB

### Reactivity:

Human, Mouse, Rat

## Protein Background

This gene encodes a protein containing regulator of chromosome condensation 1-like repeats. The encoded protein may function as a guanine nucleotide exchange factor. This gene is located in a region of chromosome 7 that is deleted in Williams-Beuren syndrome, a multisystem developmental disorder. Alternative splicing results in multiple transcript variants.

## Immunogen information

### Gene ID:

81554

### Uniprot

Q96I51

### Synonyms:

RCC1L; WBSCR16; RCC1 like

## Antibody Information

### Recommended dilutions:

WB 1:500 - 1:2000

### Source:

Rabbit

### Isotype:

IgG

### Purification:

Affinity purification

### Immunogen:

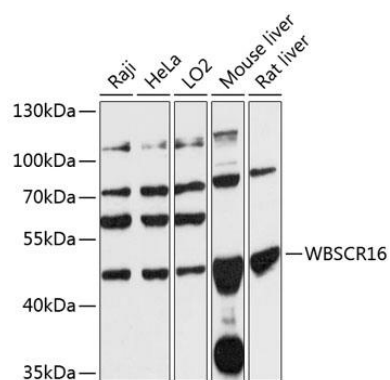
Recombinant fusion protein containing a sequence corresponding to amino acids 1-230 of human WBSCR16 (NP\_110425.2).

### Storage:

Store at -20°C. Avoid freeze / thaw cycles. Buffer: PBS with 0.02% sodium azide, 50% glycerol, pH7.3.

## Product Images

---



Western blot analysis of extracts of various cell lines, using WBSR16 antibody (CAB14330) at 1:3000 dilution. Secondary antibody: HRP Goat Anti-Rabbit IgG (H+L) (CABS014) at 1:10000 dilution. Lysates/proteins: 25ug per lane. Blocking buffer: 3% nonfat dry milk in TBST. Detection: ECL Basic Kit (CABM00020). Exposure time: 30s.