

# FXYD6 Rabbit Polyclonal Antibody



CAB14339

## Product Information

### Size:

20uL, 50uL, 100uL, 200uL

### Observed MW:

20kDa

### Calculated MW:

10kDa/12kDa

### Applications:

WB

### Reactivity:

Mouse, Rat

## Protein Background

This gene encodes a member of the FXYD family of transmembrane proteins. This particular protein encodes phosphohippolin, which likely affects the activity of Na, K-ATPase. Multiple alternatively spliced transcript variants encoding the same protein have been described. Related pseudogenes have been identified on chromosomes 10 and X. Read-through transcripts have been observed between this locus and the downstream sodium/potassium-transporting ATPase subunit gamma (FXD2, GenID 486) locus.

## Immunogen information

### Gene ID:

53826

### Uniprot

Q9H0Q3

### Synonyms:

FXD6

## Antibody Information

### Recommended dilutions:

WB 1:500 - 1:2000

### Source:

Rabbit

### Isotype:

IgG

### Purification:

Affinity purification

### Immunogen:

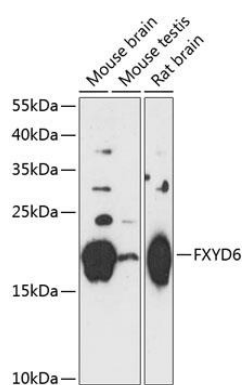
Recombinant fusion protein containing a sequence corresponding to amino acids 1-95 of human FXYD6 (NP\_071286.1).

### Storage:

Store at -20°C. Avoid freeze / thaw cycles. Buffer: PBS with 0.02% sodium azide, 50% glycerol, pH7.3.

## Product Images

---



Western blot analysis of extracts of various cell lines, using FXYD6 antibody (CAB14339) at 1:3000 dilution. Secondary antibody: HRP Goat Anti-Rabbit IgG (H+L) (CABS014) at 1:10000 dilution. Lysates/proteins: 25ug per lane. Blocking buffer: 3% nonfat dry milk in TBST. Detection: ECL Basic Kit (CABM00020). Exposure time: 90s.