

# KLC3 Rabbit Polyclonal Antibody



CAB14341

---

## Product Information

### Size:

20uL, 50uL, 100uL, 200uL

### Observed MW:

55kDa

### Calculated MW:

55kDa/56kDa

### Applications:

WB

### Reactivity:

Mouse, Rat

## Protein Background

This gene encodes a member of the kinesin light chain gene family. Kinesins are molecular motors involved in the transport of cargo along microtubules, and are composed of two kinesin heavy chain (KHC) and two kinesin light chain (KLC) molecules. KLCs are thought to typically be involved in binding cargo and regulating kinesin activity. In the rat, a protein similar to this gene product is expressed in post-meiotic spermatids, where it associates with structural components of sperm tails and mitochondria.

## Immunogen information

### Gene ID:

147700

### Uniprot

Q6P597

### Synonyms:

KLC3; KLC2; KLC2L; KLCt; KNS2B

## Antibody Information

### Recommended dilutions:

WB 1:500 - 1:2000

### Source:

Rabbit

### Isotype:

IgG

### Purification:

Affinity purification

### Immunogen:

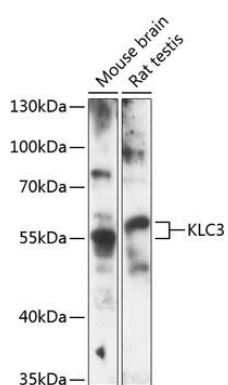
Recombinant fusion protein containing a sequence corresponding to amino acids 1-135 of human KLC3 (NP\_803136.2).

### Storage:

Store at -20°C. Avoid freeze / thaw cycles. Buffer: PBS with 0.02% sodium azide, 50% glycerol, pH7.3.

## Product Images

---



Western blot analysis of extracts of various cell lines, using KLC3 antibody (CAB14341) at 1:3000 dilution. Secondary antibody: HRP Goat Anti-Rabbit IgG (H+L) (CABS014) at 1:10000 dilution. Lysates/proteins: 25ug per lane. Blocking buffer: 3% nonfat dry milk in TBST. Detection: ECL Enhanced Kit (CABM00021). Exposure time: 90s.