

NDUFAF4 Rabbit Polyclonal Antibody



CAB14345

Product Information

Size:

20uL, 50uL, 100uL, 200uL

Observed MW:

20kDa

Calculated MW:

20kDa

Applications:

WB IHC IF

Reactivity:

Human, Mouse, Rat

Protein Background

NADH:ubiquinone oxidoreductase (complex I) catalyzes the transfer of electrons from NADH to ubiquinone (coenzyme Q) in the first step of the mitochondrial respiratory chain, resulting in the translocation of protons across the inner mitochondrial membrane. This gene encodes a complex I assembly factor. Mutations in this gene are a cause of mitochondrial complex I deficiency.

Immunogen information

Gene ID:

29078

Uniprot

Q9P032

Synonyms:

NDUFAF4; C6orf66; HRPAP20; HSPC125; My013; bA22L21.1

Antibody Information

Recommended dilutions:

WB 1:500 - 1:2000 IHC 1:50
- 1:200 IF 1:50 - 1:200

Source:

Rabbit

Isotype:

IgG

Purification:

Affinity purification

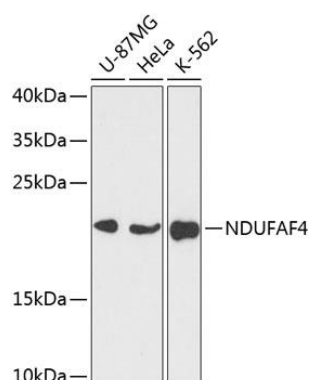
Immunogen:

Recombinant fusion protein containing a sequence corresponding to amino acids 1-170 of human NDUFAF4 (NP_054884.1).

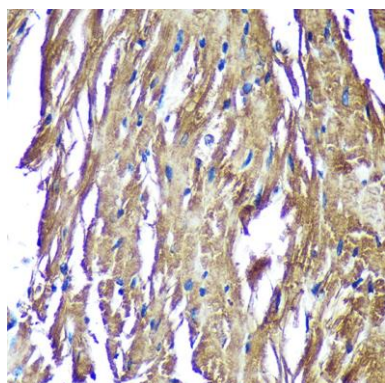
Storage:

Store at -20°C. Avoid freeze / thaw cycles. Buffer: PBS with 0.02% sodium azide, 50% glycerol, pH7.3.

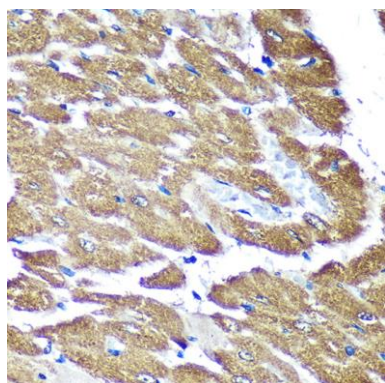
Product Images



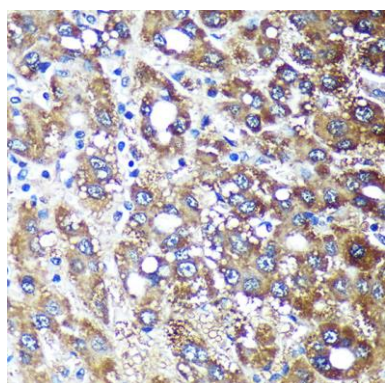
Western blot analysis of extracts of various cell lines, using NDUFAF4 antibody (CAB14345) at 1:3000 dilution. Secondary antibody: HRP Goat Anti-Rabbit IgG (H+L) (CABS014) at 1:10000 dilution. Lysates/proteins: 25ug per lane. Blocking buffer: 3% nonfat dry milk in TBST. Detection: ECL Enhanced Kit (CABM00021). Exposure time: 30s.



Immunohistochemistry of paraffin-embedded Mouse heart using NDUFAF4 Rabbit pAb (CAB14345) at dilution of 1:100 (40x lens).



Immunohistochemistry of paraffin-embedded Rat heart using NDUFAF4 Rabbit pAb (CAB14345) at dilution of 1:100 (40x lens).



Immunohistochemistry of paraffin-embedded Human liver cancer using NDUFAF4 Rabbit pAb (CAB14345) at dilution of 1:100 (40x lens).