

# NECAP2 Rabbit Polyclonal Antibody



CAB14346

---

## Product Information

### Size:

20uL, 50uL, 100uL, 200uL

### Observed MW:

28kDa

### Calculated MW:

19kDa/25kDa/28kDa/29kDa

### Applications:

WB

### Reactivity:

Mouse

## Protein Background

This gene likely encodes a member of the adaptin-ear-binding coat-associated protein family. Studies of a similar protein in rat suggest a role in clathrin-mediated endocytosis. Alternatively spliced transcript variants have been described.

## Immunogen information

### Gene ID:

55707

### Uniprot

Q9NVZ3

### Synonyms:

NECAP2

## Antibody Information

### Recommended dilutions:

WB 1:500 - 1:2000

### Source:

Rabbit

### Isotype:

IgG

### Purification:

Affinity purification

### Immunogen:

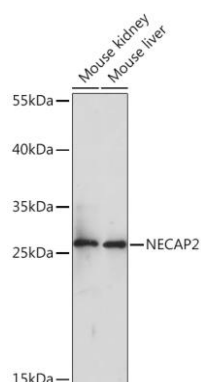
Recombinant fusion protein containing a sequence corresponding to amino acids 194-263 of human NECAP2 (NP\_060560.1).

### Storage:

Store at -20°C. Avoid freeze / thaw cycles. Buffer: PBS with 0.02% sodium azide, 50% glycerol, pH7.3.

## Product Images

---



Western blot analysis of extracts of various cell lines, using NECAP2 Rabbit pAb (CAB14346) at 1:1000 dilution. Secondary antibody: HRP Goat Anti-Rabbit IgG (H+L) (CABS014) at 1:10000 dilution. Lysates/proteins: 25ug per lane. Blocking buffer: 3% nonfat dry milk in TBST. Detection: ECL Basic Kit (CABM00020). Exposure time: 10s.