

# [KO Validated] KMT2A Rabbit Polyclonal Antibody

## CAB1435



### Product Information

**Size:**

20uL, 50uL, 100uL, 200uL

**Observed MW:**

200kDa

**Calculated MW:**

427kDa/431kDa/432kDa

**Applications:**

WB IHC IF

**Reactivity:**

Human, Mouse, Rat

### Antibody Information

**Recommended dilutions:**

WB 1:500 - 1:2000 IHC 1:50  
- 1:200 IF 1:50 - 1:200

**Source:**

Rabbit

**Isotype:**

IgG

**Purification:**

Affinity purification

### Protein Background

This gene encodes a transcriptional coactivator that plays an essential role in regulating gene expression during early development and hematopoiesis. The encoded protein contains multiple conserved functional domains. One of these domains, the SET domain, is responsible for its histone H3 lysine 4 (H3K4) methyltransferase activity which mediates chromatin modifications associated with epigenetic transcriptional activation. This protein is processed by the enzyme Taspase 1 into two fragments, MLL-C and MLL-N. These fragments reassociate and further assemble into different multiprotein complexes that regulate the transcription of specific target genes, including many of the HOX genes. Multiple chromosomal translocations involving this gene are the cause of certain acute lymphoid leukemias and acute myeloid leukemias. Alternate splicing results in multiple transcript variants.

### Immunogen information

**Gene ID:**

4297

**Uniprot**

Q03164

**Synonyms:**

KMT2A; ALL-1; CXXC7; HRX; HTRX1; MLL; MLL1; MLL1A; TRX1;  
WDSTS; MLL-AF9; MLL/GAS7; TET1-MLL

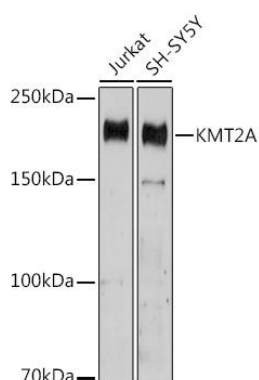
**Immunogen:**

Recombinant fusion protein containing a sequence corresponding to amino acids 752-949 of human KMT2A (NP\_005924.2).

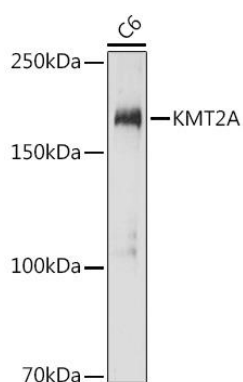
**Storage:**

Store at -20°C. Avoid freeze / thaw cycles. Buffer: PBS with 0.02% sodium azide, 50% glycerol, pH7.3.

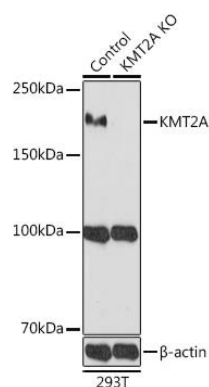
## Product Images



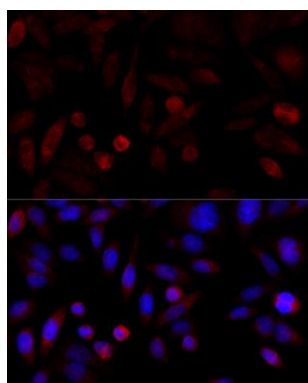
Western blot analysis of extracts of various cell lines, using KMT2A Rabbit pAb (CAB1435) at 1:1000 dilution. Secondary antibody: HRP Goat Anti-Rabbit IgG (H+L) (CABS014) at 1:10000 dilution. Lysates/proteins: 25ug per lane. Blocking buffer: 3% nonfat dry milk in TBST. Detection: ECL Basic Kit (CABM00020). Exposure time: 180s.



Western blot analysis of extracts of C6 cells, using KMT2A Rabbit pAb (CAB1435) at 1:1000 dilution. Secondary antibody: HRP Goat Anti-Rabbit IgG (H+L) (CABS014) at 1:10000 dilution. Lysates/proteins: 25ug per lane. Blocking buffer: 3% nonfat dry milk in TBST. Detection: ECL Enhanced Kit (CABM00021). Exposure time: 180s.



Western blot analysis of extracts of 293T cells, using KMT2A antibody (CAB1435) at 1:1000 dilution. Secondary antibody: HRP Goat Anti-Rabbit IgG (H+L) (CABS014) at 1:10000 dilution. Lysates/proteins: 25ug per lane. Blocking buffer: 3% nonfat dry milk in TBST. Detection: ECL Basic Kit (CABM00020). Exposure time: 180s.



Immunofluorescence analysis of HeLa cells using KMT2A antibody (CAB1435) at dilution of 1:100 (40x lens). Blue: DAPI for nuclear staining.