

SH3BP4 Rabbit Polyclonal Antibody



CAB14351

Product Information

Size:

20uL, 50uL, 100uL, 200uL

Observed MW:

107kDa

Calculated MW:

60kDa/107kDa

Applications:

WB

Reactivity:

Human, Mouse

Protein Background

This gene encodes a protein with 3 Asn-Pro-Phe (NPF) motifs, an SH3 domain, a PXXP motif, a bipartite nuclear targeting signal, and a tyrosine phosphorylation site. This protein is involved in cargo-specific control of clathrin-mediated endocytosis, specifically controlling the internalization of a specific protein receptor.

Immunogen information

Gene ID:

23677

Uniprot

Q9P0V3

Synonyms:

SH3BP4; BOG25; TTP

Antibody Information

Recommended dilutions:

WB 1:500 - 1:2000

Source:

Rabbit

Isotype:

IgG

Purification:

Affinity purification

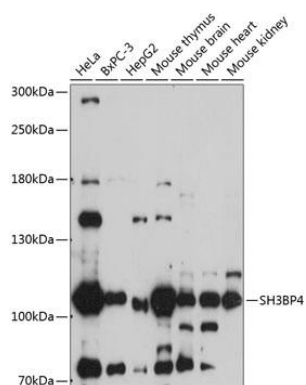
Immunogen:

Recombinant fusion protein containing a sequence corresponding to amino acids 784-963 of human SH3BP4 (NP_055336.1).

Storage:

Store at -20°C. Avoid freeze / thaw cycles. Buffer: PBS with 0.02% sodium azide, 50% glycerol, pH7.3.

Product Images



Western blot analysis of extracts of various cell lines, using SH3BP4 antibody (CAB14351) at 1:1000 dilution. Secondary antibody: HRP Goat Anti-Rabbit IgG (H+L) (CABS014) at 1:10000 dilution. Lysates/proteins: 25ug per lane. Blocking buffer: 3% nonfat dry milk in TBST. Detection: ECL Basic Kit (CABM00020). Exposure time: 90s.