

CAP2 Rabbit Polyclonal Antibody



CAB14358

Product Information

Size:

20uL, 50uL, 100uL, 200uL

Observed MW:

55kDa

Calculated MW:

24kDa/45kDa/52kDa

Applications:

WB

Reactivity:

Human, Mouse, Rat

Protein Background

This gene was identified by its similarity to the gene for human adenylyl cyclase-associated protein. The function of the protein encoded by this gene is unknown. However, the protein appears to be able to interact with adenylyl cyclase-associated protein and actin.

Immunogen information

Gene ID:

10486

Uniprot

P40123

Synonyms:

CAP2

Antibody Information

Recommended dilutions:

WB 1:500 - 1:2000

Source:

Rabbit

Isotype:

IgG

Purification:

Affinity purification

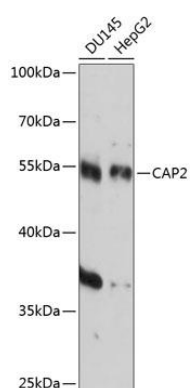
Immunogen:

Recombinant fusion protein containing a sequence corresponding to amino acids 128-477 of human CAP2 (NP_006357.1).

Storage:

Store at -20°C. Avoid freeze / thaw cycles. Buffer: PBS with 0.02% sodium azide, 50% glycerol, pH7.3.

Product Images



Western blot analysis of extracts of various cell lines, using CAP2 antibody (CAB14358) at 1:3000 dilution. Secondary antibody: HRP Goat Anti-Rabbit IgG (H+L) (CABS014) at 1:10000 dilution. Lysates/proteins: 25ug per lane. Blocking buffer: 3% nonfat dry milk in TBST. Detection: ECL Basic Kit (CABM00020). Exposure time: 10s.