

MNS1 Rabbit Polyclonal Antibody



CAB14363

Product Information

Size:

20uL, 50uL, 100uL, 200uL

Observed MW:

60kDa

Calculated MW:

60kDa

Applications:

WB

Reactivity:

Human, Mouse, Rat

Protein Background

This gene encodes a protein highly similar to the mouse meiosis-specific nuclear structural 1 protein. The mouse protein was shown to be expressed at the pachytene stage during spermatogenesis and may function as a nuclear skeletal protein to regulate nuclear morphology during meiosis.

Immunogen information

Gene ID:

55329

Uniprot

Q8NEH6

Synonyms:

MNS1; SPATA40

Antibody Information

Recommended dilutions:

WB 1:500 - 1:2000

Source:

Rabbit

Isotype:

IgG

Purification:

Affinity purification

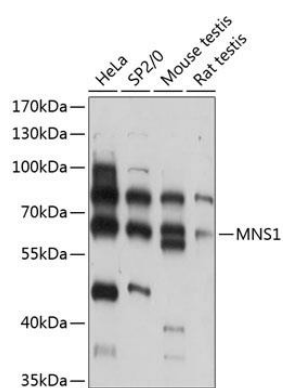
Immunogen:

Recombinant fusion protein containing a sequence corresponding to amino acids 366-495 of human MNS1 (NP_060835.1).

Storage:

Store at -20°C. Avoid freeze / thaw cycles. Buffer: PBS with 0.02% sodium azide, 50% glycerol, pH7.3.

Product Images



Western blot analysis of extracts of various cell lines, using MNS1 antibody (CAB14363) at 1:3000 dilution. Secondary antibody: HRP Goat Anti-Rabbit IgG (H+L) (CABS014) at 1:10000 dilution. Lysates/proteins: 25ug per lane. Blocking buffer: 3% nonfat dry milk in TBST. Detection: ECL Basic Kit (CABM00020). Exposure time: 30s.