

# RPL36AL Rabbit Polyclonal Antibody



CAB14366

## Product Information

### Size:

20uL, 50uL, 100uL, 200uL

### Observed MW:

16kDa

### Calculated MW:

12kDa

### Applications:

WB IF

### Reactivity:

Human, Mouse, Rat

## Antibody Information

### Recommended dilutions:

WB 1:500 - 1:2000 IF 1:50 - 1:100

### Source:

Rabbit

### Isotype:

IgG

### Purification:

Affinity purification

## Protein Background

Cytoplasmic ribosomes, organelles that catalyze protein synthesis, consist of a small 40S subunit and a large 60S subunit. Together these subunits are composed of 4 RNA species and approximately 80 structurally distinct proteins. This gene encodes a ribosomal protein that is a component of the 60S subunit. The protein, which shares sequence similarity with yeast ribosomal protein L44, belongs to the L44E (L36AE) family of ribosomal proteins. This gene and the human gene officially named ribosomal protein L36a (RPL36A) encode nearly identical proteins; however, they are distinct genes. Although the name of this gene has been referred to as ribosomal protein L36a (RPL36A), its official name is ribosomal protein L36a-like (RPL36AL). As is typical for genes encoding ribosomal proteins, there are multiple processed pseudogenes of this gene dispersed through the genome.

## Immunogen information

### Gene ID:

6166

### Uniprot

Q969Q0

### Synonyms:

RPL36AL; RPL36A

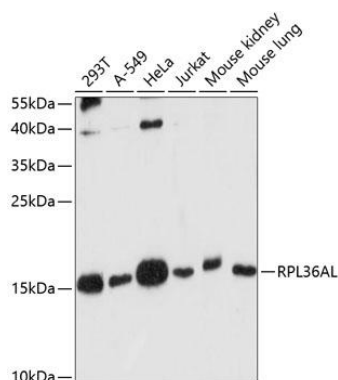
### Immunogen:

Recombinant fusion protein containing a sequence corresponding to amino acids 1-106 of human RPL36AL (NP\_000992.1).

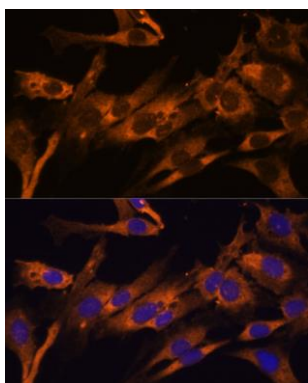
### Storage:

Store at -20°C. Avoid freeze / thaw cycles. Buffer: PBS with 0.02% sodium azide, 50% glycerol, pH7.3.

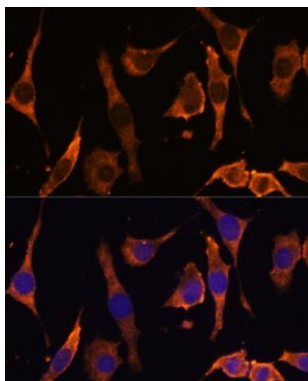
## Product Images



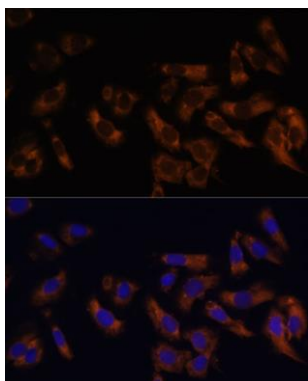
Western blot analysis of extracts of various cell lines, using RPL36AL antibody (CAB14366) at 1:1000 dilution. Secondary antibody: HRP Goat Anti-Rabbit IgG (H+L) (CABS014) at 1:10000 dilution. Lysates/proteins: 25ug per lane. Blocking buffer: 3% nonfat dry milk in TBST. Detection: ECL Basic Kit (CABM00020). Exposure time: 90s.



Immunofluorescence analysis of C6 cells using RPL36AL Polyclonal Antibody (CAB14366) at dilution of 1:100 (40x lens). Blue: DAPI for nuclear staining.



Immunofluorescence analysis of L929 cells using RPL36AL Polyclonal Antibody (CAB14366) at dilution of 1:100 (40x lens). Blue: DAPI for nuclear staining.



Immunofluorescence analysis of U-2 OS cells using RPL36AL Polyclonal Antibody (CAB14366) at dilution of 1:100 (40x lens). Blue: DAPI for nuclear staining.