

# SLMAP Rabbit Polyclonal Antibody



CAB14367

## Product Information

### Size:

20uL, 50uL, 100uL, 200uL

### Observed MW:

45kDa

### Calculated MW:

31-57kDa/90-95kDa

### Applications:

WB

### Reactivity:

Mouse, Rat

## Antibody Information

### Recommended dilutions:

WB 1:500 - 1:2000

### Source:

Rabbit

### Isotype:

IgG

### Purification:

Affinity purification

## Protein Background

This gene encodes a component of a conserved striatin-interacting phosphatase and kinase complex. Striatin family complexes participate in a variety of cellular processes including signaling, cell cycle control, cell migration, Golgi assembly, and apoptosis. The protein encoded by this gene is a coiled-coil, tail-anchored membrane protein with a single C-terminal transmembrane domain that is posttranslationally inserted into membranes. Mutations in this gene are associated with Brugada syndrome, a cardiac channelopathy. Alternative splicing results in multiple transcript variants.

## Immunogen information

### Gene ID:

7871

### Uniprot

Q14BN4

### Synonyms:

SLMAP; SLAP

### Immunogen:

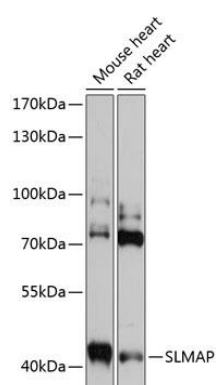
Recombinant fusion protein containing a sequence corresponding to amino acids 540-790 of human SLMAP (NP\_009090.2).

### Storage:

Store at -20°C. Avoid freeze / thaw cycles. Buffer: PBS with 0.02% sodium azide, 50% glycerol, pH7.3.

## Product Images

---



Western blot analysis of extracts of various cell lines, using SLMAP antibody (CAB14367) at 1:3000 dilution. Secondary antibody: HRP Goat Anti-Rabbit IgG (H+L) (CABS014) at 1:10000 dilution. Lysates/proteins: 25ug per lane. Blocking buffer: 3% nonfat dry milk in TBST. Detection: ECL Basic Kit (CABM00020). Exposure time: 30s.