

# ATP12A Rabbit Polyclonal Antibody



CAB14372

---

## Product Information

### Size:

20uL, 50uL, 100uL, 200uL

### Observed MW:

116kDa

### Calculated MW:

115kDa/116kDa

### Applications:

WB

### Reactivity:

Human

## Antibody Information

### Recommended dilutions:

WB 1:500 - 1:2000

### Source:

Rabbit

### Isotype:

IgG

### Purification:

Affinity purification

## Protein Background

The protein encoded by this gene belongs to the family of P-type cation transport ATPases. This gene encodes a catalytic subunit of the ouabain-sensitive H<sup>+</sup>/K<sup>+</sup> -ATPase that catalyzes the hydrolysis of ATP coupled with the exchange of H<sup>(+)</sup> and K<sup>(+)</sup> ions across the plasma membrane. It is also responsible for potassium absorption in various tissues. Two transcript variants encoding different isoforms have been found for this gene.

## Immunogen information

### Gene ID:

479

### Uniprot

P54707

### Synonyms:

ATP12A; ATP1AL1; HK

### Immunogen:

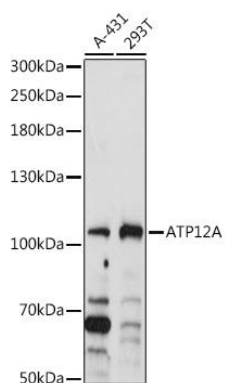
Recombinant fusion protein containing a sequence corresponding to amino acids 890-980 of human ATP12A (NP\_001172014.1).

### Storage:

Store at -20°C. Avoid freeze / thaw cycles. Buffer: PBS with 0.02% sodium azide, 50% glycerol, pH7.3.

## Product Images

---



Western blot analysis of extracts of various cell lines, using ATP12A antibody (CAB14372) at 1:1000 dilution. Secondary antibody: HRP Goat Anti-Rabbit IgG (H+L) (CABS014) at 1:10000 dilution. Lysates/proteins: 25ug per lane. Blocking buffer: 3% nonfat dry milk in TBST. Detection: ECL Basic Kit (CABM00020). Exposure time: 5s.