

KCNJ12 Rabbit Polyclonal Antibody



CAB14375

Product Information

Size:

20uL, 50uL, 100uL, 200uL

Observed MW:

49kDa

Calculated MW:

49kDa

Applications:

WB

Reactivity:

Mouse, Rat

Antibody Information

Recommended dilutions:

WB 1:500 - 1:2000

Source:

Rabbit

Isotype:

IgG

Purification:

Affinity purification

Protein Background

This gene encodes an inwardly rectifying K⁺ channel which may be blocked by divalent cations. This protein is thought to be one of multiple inwardly rectifying channels which contribute to the cardiac inward rectifier current (IK1). The gene is located within the Smith-Magenis syndrome region on chromosome 17.

Immunogen information

Gene ID:

3768

Uniprot

Q14500

Synonyms:

KCNJ12; IRK-2; IRK2; KCNJN1; Kir2.2; Kir2.2v; hIRK; hIRK1; hkir2.2x; kcnj12x

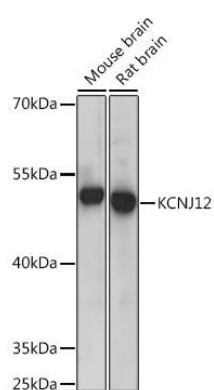
Immunogen:

Recombinant fusion protein containing a sequence corresponding to amino acids 354-433 of human KCNJ12 (NP_066292.2).

Storage:

Store at -20°C. Avoid freeze / thaw cycles. Buffer: PBS with 0.02% sodium azide, 50% glycerol, pH7.3.

Product Images



Western blot analysis of extracts of various cell lines, using KCNJ12 Rabbit pAb (CAB14375) at 1:300 dilution. Secondary antibody: HRP Goat Anti-Rabbit IgG (H+L) (CABS014) at 1:10000 dilution. Lysates/proteins: 25ug per lane. Blocking buffer: 3% nonfat dry milk in TBST. Detection: ECL Basic Kit (CABM00020). Exposure time: 5s.