

PRRG2 Rabbit Polyclonal Antibody



CAB14380

Product Information

Size:

20uL, 50uL, 100uL, 200uL

Observed MW:

23kDa

Calculated MW:

22kDa

Applications:

WB

Reactivity:

Human, Mouse, Rat

Protein Background

The protein encoded by this gene is a single-pass transmembrane protein containing an N-terminal gamma-carboxyglutamic acid (Gla) domain and tandem Pro/Leu-Pro-Xaa-Tyr (PY) motifs at its C-terminal end. The Gla domain is exposed on the cell surface while the PY motifs are cytoplasmic. The PY motifs of the encoded protein have been shown to interact with YAP1, a WW domain-containing protein. Therefore, it is thought that the encoded protein may be part of a signal transduction pathway. Two transcript variants encoding different isoforms have been found for this gene.

Immunogen information

Gene ID:

5639

Uniprot

O14669

Synonyms:

PRRG2; PRGP2

Antibody Information

Recommended dilutions:

WB 1:500 - 1:2000

Source:

Rabbit

Isotype:

IgG

Purification:

Affinity purification

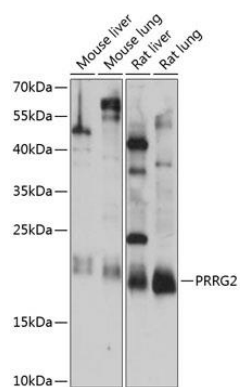
Immunogen:

Recombinant fusion protein containing a sequence corresponding to amino acids 1-179 of human PRRG2 (NP_001303264.1).

Storage:

Store at -20°C. Avoid freeze / thaw cycles. Buffer: PBS with 0.02% sodium azide, 50% glycerol, pH7.3.

Product Images



Western blot analysis of extracts of various cell lines, using PRRG2 antibody (CAB14380) at 1:1000 dilution. Secondary antibody: HRP Goat Anti-Rabbit IgG (H+L) (CABS014) at 1:10000 dilution. Lysates/proteins: 25ug per lane. Blocking buffer: 3% nonfat dry milk in TBST. Detection: ECL Basic Kit (CABM00020). Exposure time: 15s.